



---

## **RURAL HIGHWAYS 2009/ 2010**

---

**Funders: Governments of NSW, VIC, QLD, WA, SA, TAS, ACT, NT  
& National Packaging Covenant Industry Association (NPCIA)**

Prepared for: Keep Australia Beautiful National Association

GPO Box 193, Canberra ACT 2601

M: 00419 016 401, [scottl@kab.org.au](mailto:scottl@kab.org.au)

P: 02 9698 8773, [www.kab.org.au](http://www.kab.org.au)

Project No: 8837

Date: July 2010

# ***CONTENTS***

Rural Highway Litter Report .....	3
1.1 Executive Summary .....	4
Rural Highway Sites .....	4
Overall Results .....	4
1.2 National .....	5
At a Glance .....	5
Comparison by Main Material Types .....	5
The Dirty Dozen .....	7
1.3 New South Wales .....	10
At a Glance .....	10
Comparison by Main Material Types .....	10
The Dirty Dozen .....	12
1.4 Northern Territory .....	15
At a Glance .....	15
Comparison by Main Material Types .....	15
The Dirty Dozen .....	17
1.5 Queensland .....	20
At a Glance .....	20
Comparison by Main Material Types .....	20
The Dirty Dozen .....	22
1.6 South Australia .....	25
At a Glance .....	25
Comparison by Main Material Types .....	25
The Dirty Dozen .....	27
1.7 Tasmania .....	30
At a Glance .....	30
Comparison by Main Material Types .....	30
The Dirty Dozen .....	32
1.8 Victoria .....	35
At a Glance .....	35
Comparison by Main Material Types .....	35
The Dirty Dozen .....	37
1.9 Western Australia .....	40
At a Glance .....	40
Comparison by Main Material Types .....	40
The Dirty Dozen .....	42
Appendix 1: Results Tables .....	45

# *Rural Highway Litter Report*

## **1.1 Executive Summary**

In addition to the eight current site types used for the National Litter Index, a new site type designated as 'Rural Highways' has been introduced to monitor litter item numbers and volumes in rural areas.

84 rural highway sites were selected and scoped for the National Litter Index. The following number of sites were assigned for each state and territory:

- 8 sites each for South Australia, the Northern Territory and Tasmania
- 15 sites each for New South Wales, Queensland, Victoria and Western Australia.

The litter count results in this report are based on the initial count conducted at these sites, this took place during the May 2010 count.

### **Rural Highway Sites**

Rural highways include roads that are major country roads with road markings and have one lane of traffic only in each direction.

Generally, the count area for rural highways commences from the area beginning at the edge of the road, and extending out from the road to the nearest fence/ boundary or up to a distance of 10 meters out from the road side if no such fence/ boundary exists. Two such areas should be collected from, one on each side of the road, with each area extending for a length of approximately 100 meters along the road.

### **Overall Results**

	Items per 1,000m <sup>2</sup>	Volume (litres) per 1,000m <sup>2</sup>
	09/10	09/10
<b>NATIONAL</b>	36.6	8.49
<b>NSW</b>	40.6	7.83
<b>NT</b>	92.5	11.33
<b>QLD</b>	37.5	7.36
<b>SA</b>	16.4	3.60
<b>TAS</b>	58.0	23.02
<b>VIC</b>	18.6	1.54
<b>WA</b>	36.0	14.60

## **1.2 National**

### **At a Glance**

The overall average number of items per 1,000m<sup>2</sup> across the 84 rural highway sites surveyed in the 2009/10 National Litter Index was 36.6, while the overall average estimated volume per 1,000m<sup>2</sup> was 8.49 litres.

Plastic litter objects contributed the largest number of items (9.4 items per 1,000m<sup>2</sup>) and amount of volume (3.01 litres per 1,000m<sup>2</sup>) to the litter stream among rural highway sites nationally.

### **Comparison by Main Material Types**

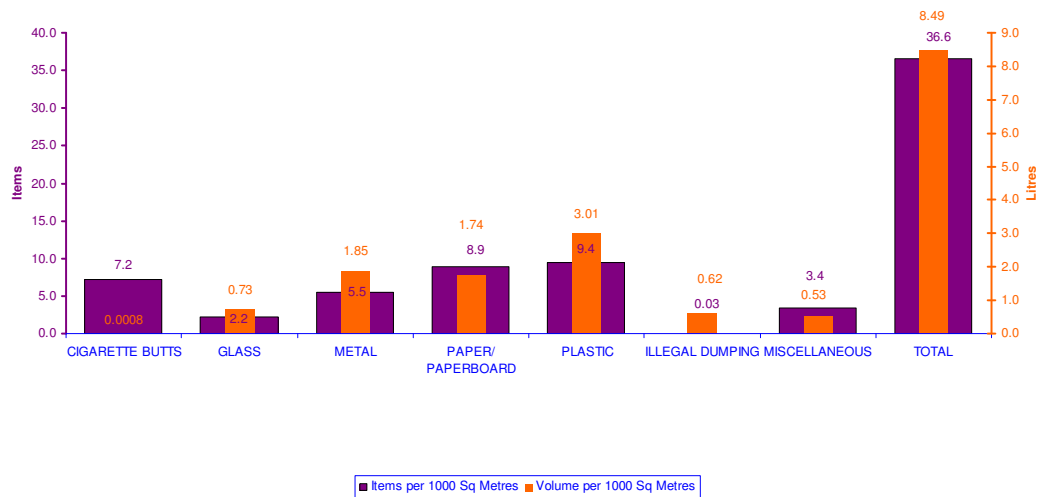
As outlined, plastic litter objects contributed the largest number of items (9.4 items per 1,000m<sup>2</sup>) to the litter stream. The number of other material litter items at rural highway sites included:

- Paper/ paperboard objects (8.9 items per 1,000m<sup>2</sup>)
- Cigarette butts (7.2 items per 1,000m<sup>2</sup>)
- Metal objects (5.5 items per 1,000m<sup>2</sup>)
- Miscellaneous objects (3.4 items per 1,000m<sup>2</sup>)
- Glass objects (2.2 items per 1,000m<sup>2</sup>)
- Illegal dumping (0.03 items per 1,000m<sup>2</sup>)

Plastic litter objects also contributed the largest litter volumes (3.01 litres per 1,000m<sup>2</sup>). The litter volumes of other materials in the litter stream at rural highway sites included:

- Metal objects (1.85 litres per 1,000m<sup>2</sup>)
- Paper/ paperboard objects (1.74 litres per 1,000m<sup>2</sup>)
- Glass objects (0.73 litres per 1,000m<sup>2</sup>)
- Illegal dumping (0.62 litres per 1,000m<sup>2</sup>)
- Miscellaneous objects (0.53 litres per 1,000m<sup>2</sup>)
- Cigarette butts (0.0008 litres per 1,000m<sup>2</sup>)

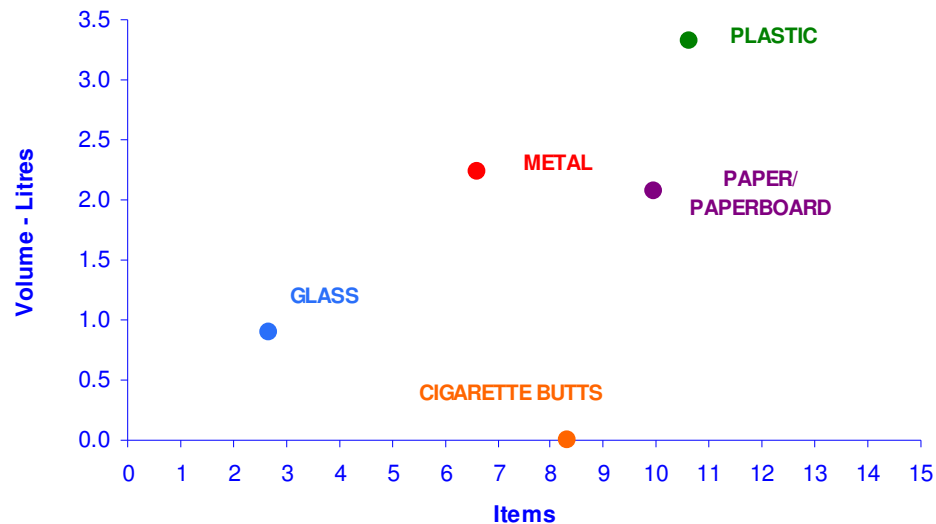
Items and Volume per 1000 Square Metres by Material Type  
NATIONAL - RURAL HIGHWAYS - 2009/ 2010



Figures for items and volumes per 1,000m<sup>2</sup> across main material types identify the following characteristics of litter objects among rural highway sites:

- Plastic litter contributed a large number of items and large volumes to the litter stream
- Paper/ paperboard items were associated with a large number of items and moderate volumes of litter
- Metal items contributed both a moderate number of items and moderate volumes to the overall litter stream
- Cigarette butts contributed a moderate to large number of items to the litter stream, however, they are only associated with a negligible litter volume
- Glass items were associated with both small numbers of litter items and low litter volumes

**Items and Volume per 1000 Square Metres by Main Material Type  
NATIONAL - RURAL HIGHWAYS - 2009/ 2010**

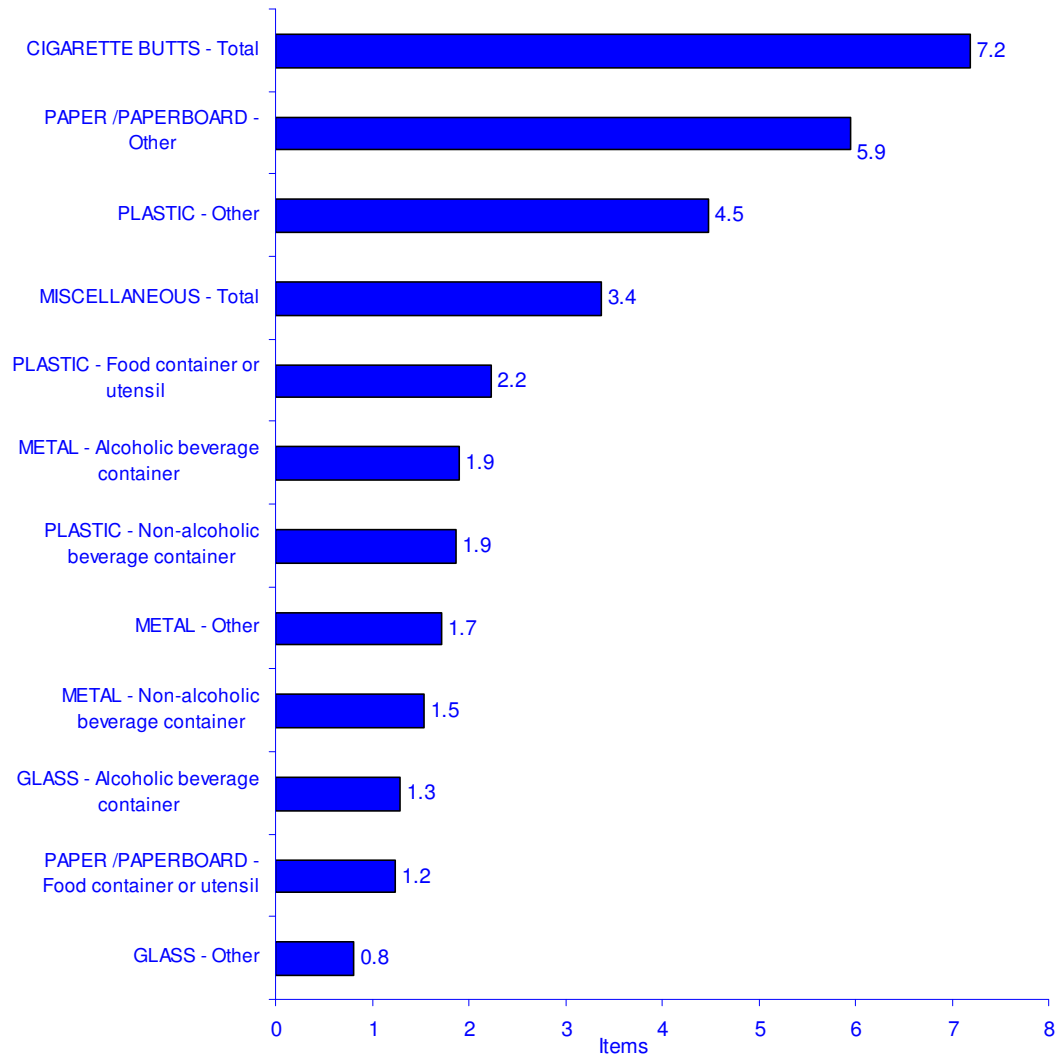


**The Dirty Dozen**

When partitioned according to object sub-type distinctions, cigarette butts emerged as the most frequently identified litter item with 7.2 butts recorded per 1,000m<sup>2</sup> during the 2009/10 count at rural highway sites. Other objects frequently identified included:

- Uncategorised paper/ paperboard objects (5.9 items per 1,000m<sup>2</sup>)
- Uncategorised plastic objects (4.5 items per 1,000m<sup>2</sup>)
- Miscellaneous items (3.4 items per 1,000m<sup>2</sup>)
- Plastic food containers and utensils (2.2 items per 1,000m<sup>2</sup>)
- Metal alcoholic beverage containers (1.9 items per 1,000m<sup>2</sup>)
- Plastic non-alcoholic beverage containers (1.9 items per 1,000m<sup>2</sup>)

**Dirty Dozen - Items per 1000 Square Metres - Object Sub-Categories  
NATIONAL - RURAL HIGHWAY SITES - 2009/ 2010**

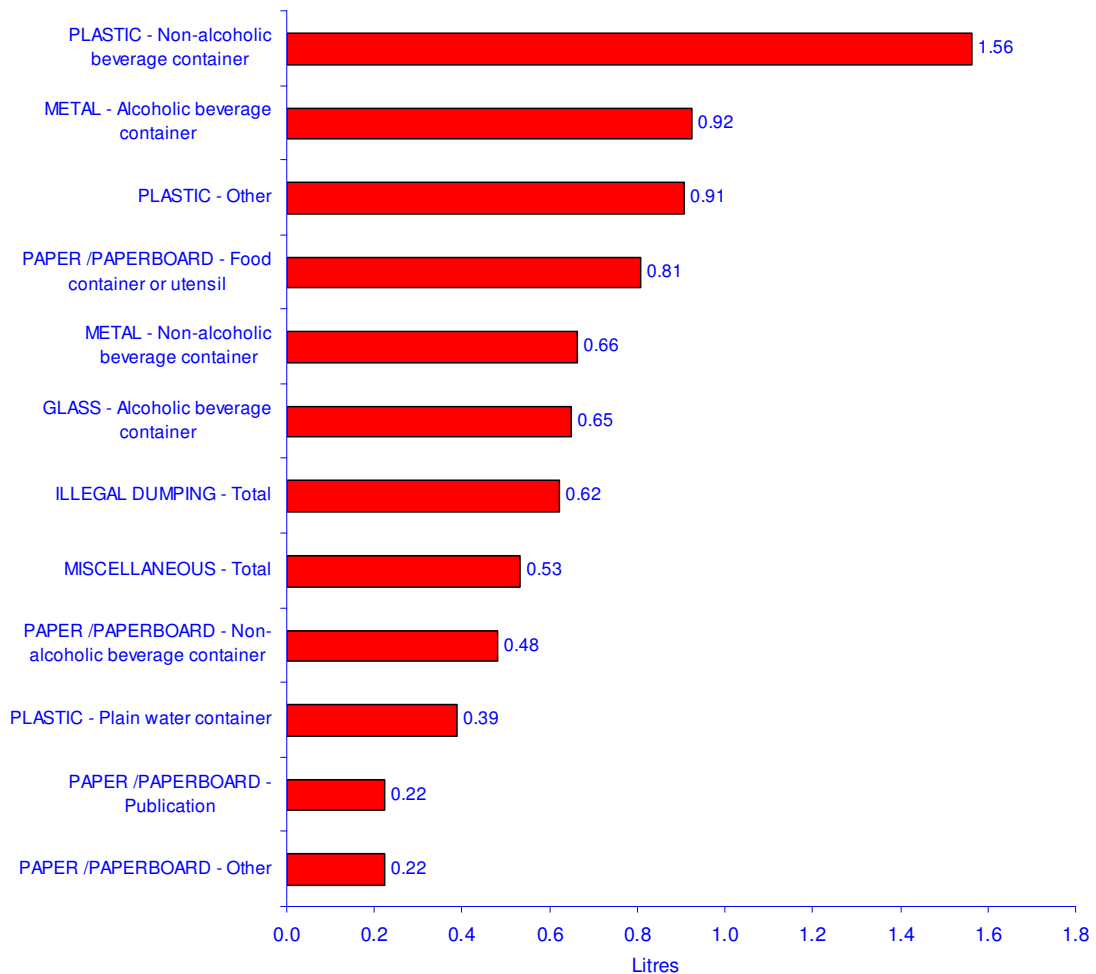


Plastic - non-alcoholic beverage containers represented the largest contribution to estimated litter volume (1.56 litres per 1,000m<sup>2</sup>) at rural highway sites during 2009/10. Other object sub-categories which were associated with higher estimated volume measurements included:

- Metal – alcoholic beverage containers (0.92 litres per 1,000m<sup>2</sup>)

- Uncategorised plastic objects (0.91 litres per 1,000m<sup>2</sup>)
- Paper/ paperboard - food containers or utensils (0.81 litres per 1,000m<sup>2</sup>)
- Metal – non-alcoholic beverage containers (0.66 litres per 1,000m<sup>2</sup>)
- Glass – alcoholic beverage containers (0.65 litres per 1,000m<sup>2</sup>)

**Dirty Dozen - Volume per 1000 Square Metres - Object Sub-Categories  
NATIONAL - RURAL HIGHWAY SITES - 2009/ 2010**



## **1.3 New South Wales**

### **At a Glance**

The overall average number of items per 1,000m<sup>2</sup> across the 15 rural highway sites surveyed within NSW during the count for the year 2009/10 was 40.6, while the overall average estimated volume per 1,000m<sup>2</sup> was 7.83 litres.

Cigarette butts contributed the largest number of items (12.3 items per 1,000m<sup>2</sup>) and paper/ paperboard objects contributed the largest volumes (2.78 litres per 1,000m<sup>2</sup>) to the litter stream among NSW rural highway sites.

### **Comparison by Main Material Types**

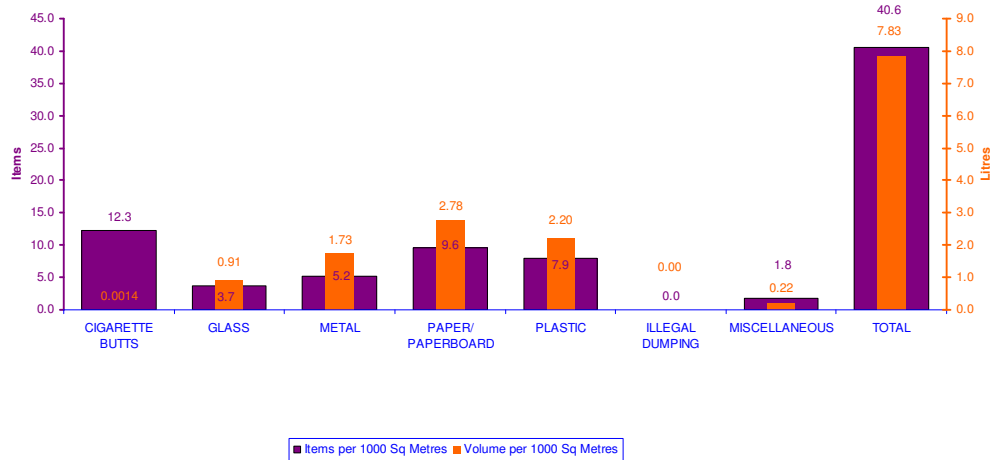
As outlined, cigarette butts contributed the largest number of items (12.3 items per 1,000m<sup>2</sup>) to the litter stream. The number of other material litter items at rural highway sites included:

- Paper/ paperboard objects (9.6 items per 1,000m<sup>2</sup>)
- Plastic objects (7.9 items per 1,000m<sup>2</sup>)
- Metal objects (5.2 items per 1,000m<sup>2</sup>)
- Glass objects (3.7 items per 1,000m<sup>2</sup>)
- Miscellaneous objects (1.8 items per 1,000m<sup>2</sup>)

Paper/ paperboard litter objects contributed the largest litter volumes (2.78 litres per 1,000m<sup>2</sup>). The litter volumes of other materials in the litter stream at rural highway sites included:

- Plastic objects (2.20 litres per 1,000m<sup>2</sup>)
- Metal objects (1.73 litres per 1,000m<sup>2</sup>)
- Glass objects (0.91 litres per 1,000m<sup>2</sup>)
- Miscellaneous objects (0.22 litres per 1,000m<sup>2</sup>)
- Cigarette butts (0.0014 litres per 1,000m<sup>2</sup>)

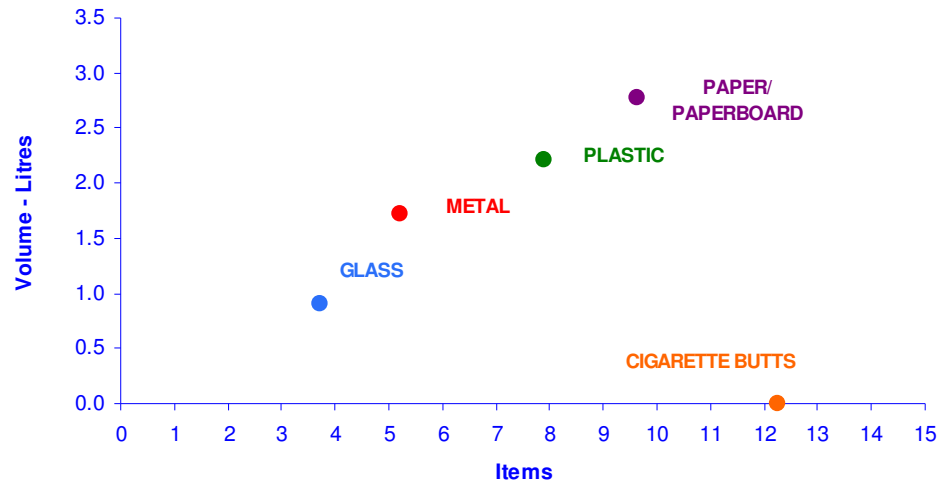
Items and Volume per 1000 Square Metres by Material Type  
NSW - RURAL HIGHWAYS - 2009/ 2010



Figures for items and volumes per 1,000m<sup>2</sup> across main material types identify the following characteristics of litter objects among NSW rural highway sites:

- Paper/ paperboard items were associated with a large number of items and large volumes of litter
- Plastic litter contributed a large number of items and moderate volumes to the litter stream
- Metal items contributed both a moderate number of items and moderate volumes to the overall litter stream
- Cigarette butts contributed a large number of items to the litter stream, however, they are only associated with a negligible litter volume
- Glass items were associated with both small numbers of litter items and low litter volumes

**Items and Volume per 1000 Square Metres by Main Material Type  
NSW - RURAL HIGHWAYS - 2009/ 2010**

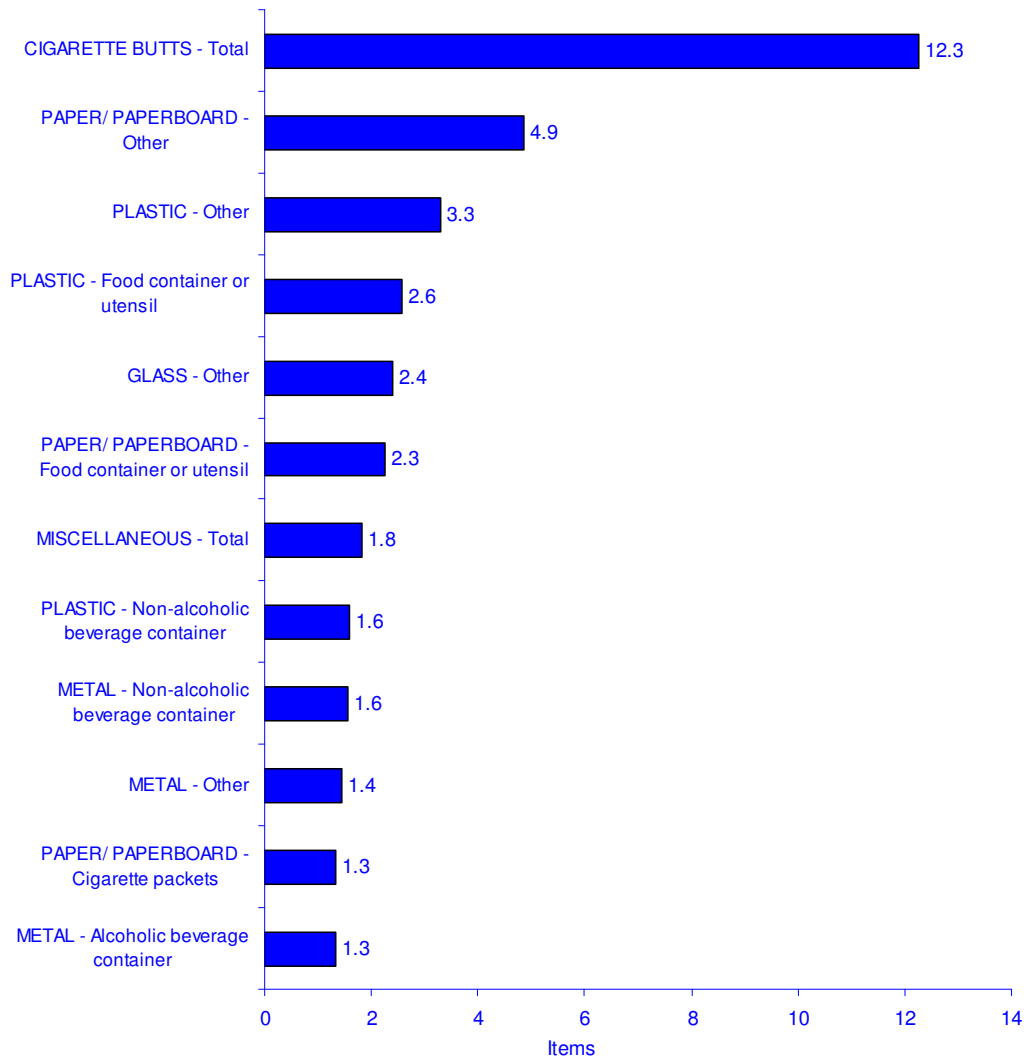


**The Dirty Dozen**

Within object type sub-categories, cigarette butts was the strongest contributor to the presence of litter objects at rural highway sites within NSW, with 12.3 butts per 1,000m<sup>2</sup> during the 2009/10 count. Other objects frequently identified included:

- Uncategorised paper/ paperboard objects (4.9 items per 1,000m<sup>2</sup>)
- Uncategorised plastic objects (3.3 items per 1,000m<sup>2</sup>)
- Plastic food containers and utensils (2.6 items per 1,000m<sup>2</sup>)
- Uncategorised glass objects (2.4 items per 1,000m<sup>2</sup>)
- Paper/ paperboard food containers and utensils (2.3 items per 1,000m<sup>2</sup>)

**Dirty Dozen - Items per 1000 Square Metres - Object Sub-Categories  
NSW - RURAL HIGHWAY SITES - 2009/ 2010**

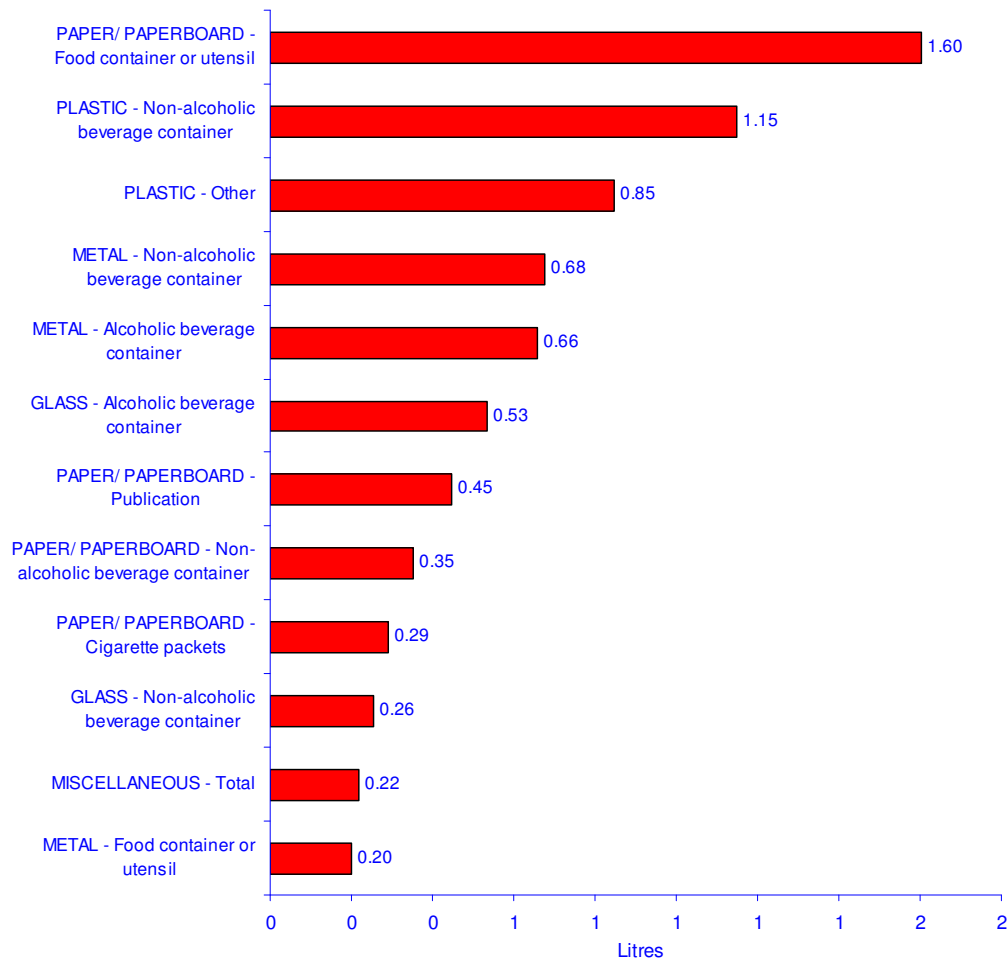


Paper/ paperboard - food containers or utensils represented the largest contribution to estimated litter volume among NSW rural highway sites in 2009/10 (1.60 litres per 1,000m<sup>2</sup>). Other object sub-categories which were associated with higher estimated volume measurements included:

- Plastic - non-alcoholic beverage containers (1.15 litres per 1,000m<sup>2</sup>)
- Uncategorised plastic objects (0.85 litres per 1,000m<sup>2</sup>)

- Metal – non-alcoholic beverage containers (0.68 litres per 1,000m<sup>2</sup>)
- Metal – alcoholic beverage containers (0.66 litres per 1,000m<sup>2</sup>)
- Glass – alcoholic beverage containers (0.53 litres per 1,000m<sup>2</sup>)

**Dirty Dozen - Volume per 1000 Square Metres - Object Sub-Categories  
NSW - RURAL HIGHWAY SITES - 2009/ 2010**



## **1.4 Northern Territory**

### **At a Glance**

The overall average number of items per 1,000m<sup>2</sup> across the 8 rural highway sites surveyed within the Northern Territory during the count for the year 2009/10 was 92.5, while the overall average estimated volume per 1,000m<sup>2</sup> was 11.33 litres.

Plastic objects contributed the largest number of items (22.8 items per 1,000m<sup>2</sup>) and miscellaneous objects contributed the largest volumes (3.63 litres per 1,000m<sup>2</sup>) to the litter stream among Northern Territory rural highway sites, these were mainly tyres and pieces of tyres.

### **Comparison by Main Material Types**

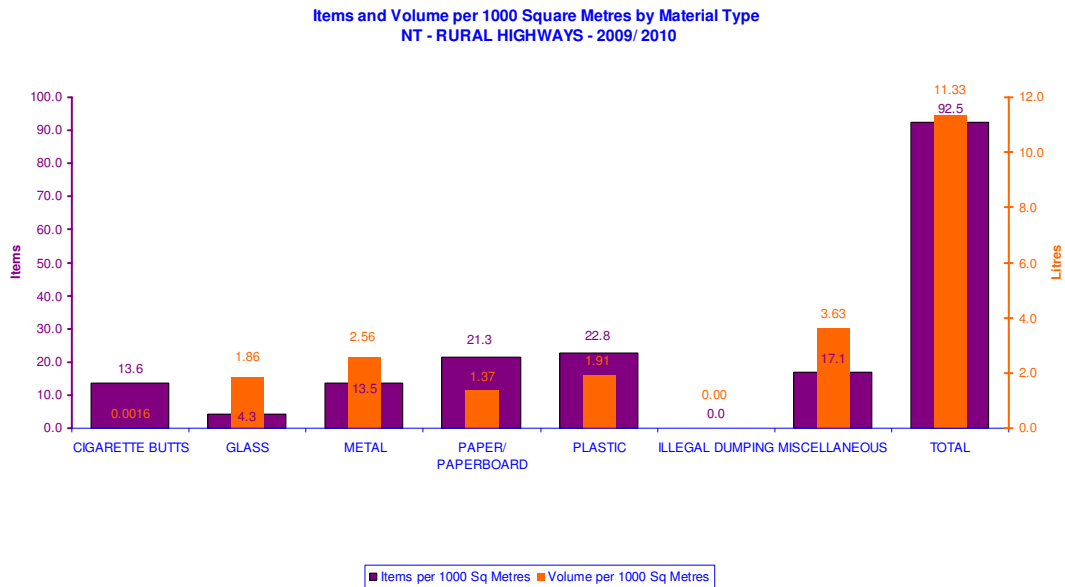
As outlined, plastic objects contributed the largest number of items (22.8 items per 1,000m<sup>2</sup>) to the litter stream. The number of other material litter items at rural highway sites included:

- Paper/ paperboard objects (21.3 items per 1,000m<sup>2</sup>)
- Miscellaneous objects (17.1 items per 1,000m<sup>2</sup>)
- Cigarette butts (13.6 items per 1,000m<sup>2</sup>)
- Metal objects (13.5 items per 1,000m<sup>2</sup>)
- Glass objects (4.3 items per 1,000m<sup>2</sup>)

Miscellaneous litter objects contributed the largest litter volumes (3.63 litres per 1,000m<sup>2</sup>), these were mainly tyres and pieces of tyres. The litter volumes of other materials in the litter stream at rural highway sites included:

- Metal litter objects (2.56 litres per 1,000m<sup>2</sup>)
- Plastic objects (1.91 litres per 1,000m<sup>2</sup>)
- Glass objects (1.86 litres per 1,000m<sup>2</sup>)
- Paper/ paperboard objects (1.37 litres per 1,000m<sup>2</sup>)

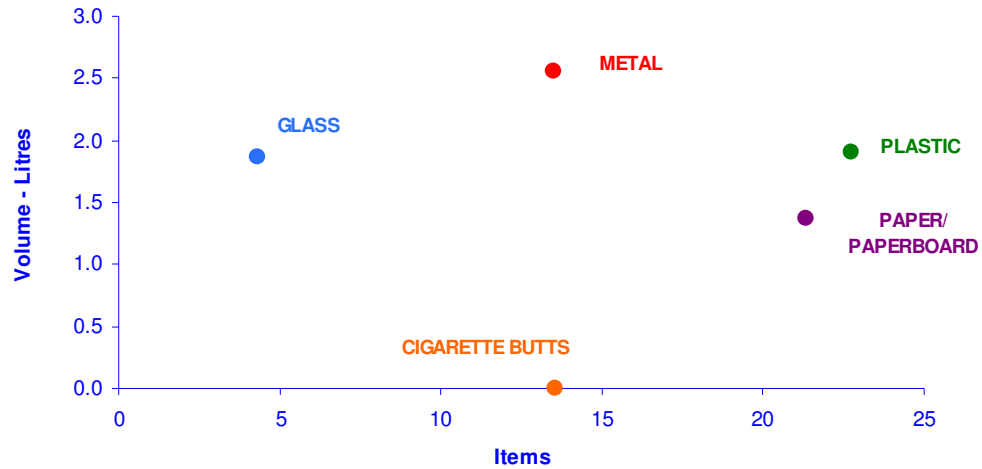
➤ Cigarette butts (0.0016 litres per 1,000m<sup>2</sup>)



Figures for items and volumes per 1,000m<sup>2</sup> across main material types identify the following characteristics of litter objects among rural highway sites in the Northern Territory:

- Plastic and paper/ paperboard litter items contribute a large number of litter items and moderate volumes to the litter stream
- Metal litter items contribute large volumes and a moderate number of litter items
- Glass contributes moderate volumes of litter and a small number of litter items
- Cigarette butts represent a moderate proportion of the litter items, however, they contribute only a negligible volume to the overall litter stream

Items and Volume per 1000 Square Metres by Main Material Type  
NT - RURAL HIGHWAYS - 2009/ 2010

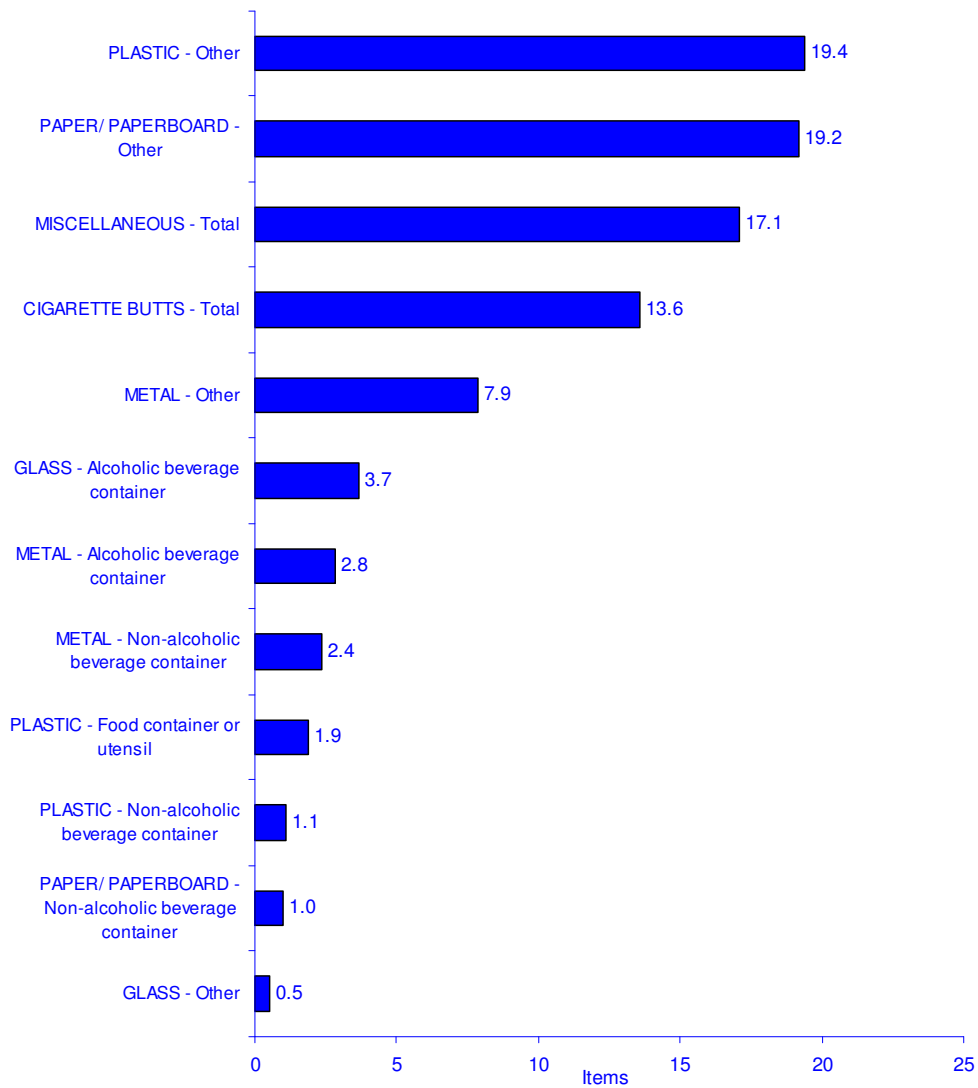


**The Dirty Dozen**

When partitioned according to object sub-type distinctions, uncategorised plastic objects was the strongest contributor to the presence of litter objects at rural highway sites within the Northern Territory, with 19.4 items per 1,000m<sup>2</sup> during the 2009/10 count. Other objects frequently identified included:

- Uncategorised paper/ paperboard objects (19.2 items per 1,000m<sup>2</sup>)
- Miscellaneous items (17.1 items per 1,000m<sup>2</sup>)
- Cigarette butts (13.6 items per 1,000m<sup>2</sup>)
- Uncategorised metal objects (7.9 items per 1,000m<sup>2</sup>)
- Glass alcoholic beverage container (3.7 items per 1,000m<sup>2</sup>)
- Metal alcoholic beverage container (2.8 items per 1,000m<sup>2</sup>)
- Metal non-alcoholic beverage container (2.4 items per 1,000m<sup>2</sup>)

**Dirty Dozen - Items per 1000 Square Metres - Object Sub-Categories  
NT - RURAL HIGHWAY SITES - 2009/ 2010**

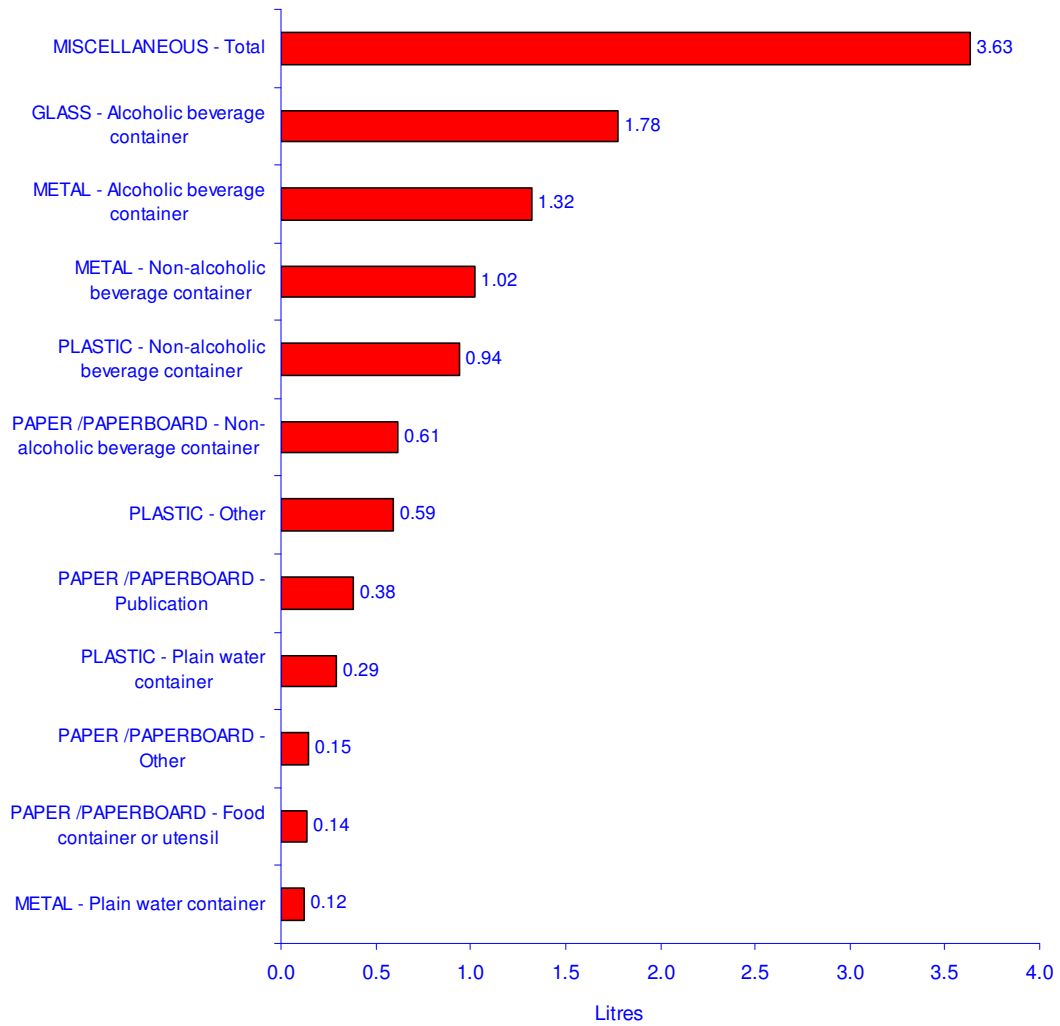


Miscellaneous items represented the largest contribution to estimated litter volume among Northern Territory rural highway sites in 2009/10 (3.63 litres per 1,000m<sup>2</sup>). Other object sub-categories which were associated with higher estimated volume measurements included:

- Glass – alcoholic beverage containers (1.76 litres per 1,000m<sup>2</sup>)
- Metal – alcoholic beverage containers (1.32 litres per 1,000m<sup>2</sup>)

- Metal – non-alcoholic beverage containers (1.02 litres per 1,000m<sup>2</sup>)
- Plastic - non-alcoholic beverage containers (0.94 litres per 1,000m<sup>2</sup>)

**Dirty Dozen - Volume per 1000 Square Metres - Object Sub-Categories  
NT - RURAL HIGHWAY SITES - 2009/ 2010**



## 1.5

## Queensland

### At a Glance

The overall average number of items per 1,000m<sup>2</sup> across the 15 rural highway sites surveyed within Queensland during the count for the year 2009/10 was 37.5, while the overall average estimated volume per 1,000m<sup>2</sup> was 7.36 litres.

Cigarette butts contributed the largest number of items (10.2 items per 1,000m<sup>2</sup>) and plastic objects contributed the largest volumes (3.51 litres per 1,000m<sup>2</sup>) to the litter stream among Queensland rural highway sites.

### Comparison by Main Material Types

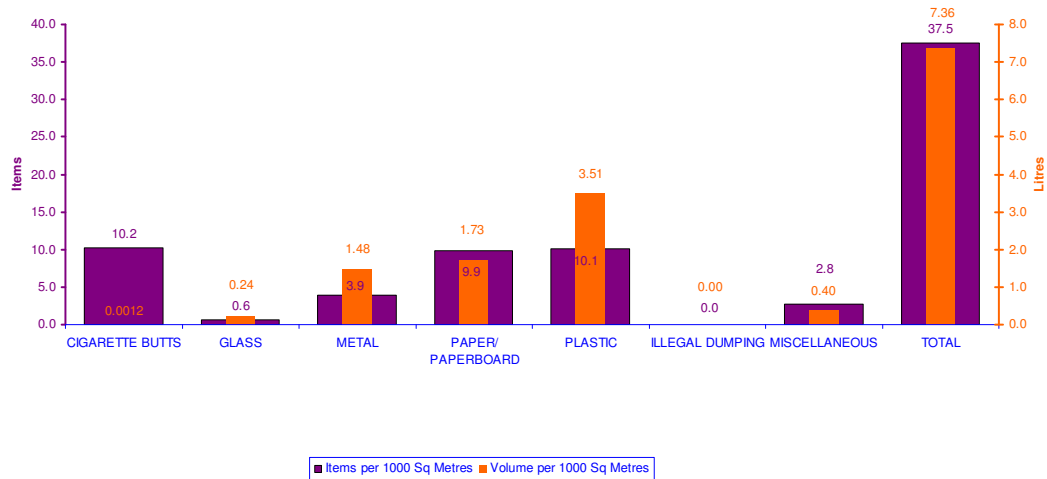
As outlined, cigarette butts contributed the largest number of items (10.2 items per 1,000m<sup>2</sup>) to the litter stream. The number of other material litter items at rural highway sites included:

- Plastic objects (10.1 items per 1,000m<sup>2</sup>)
- Paper/ paperboard objects (9.9 items per 1,000m<sup>2</sup>)
- Metal objects (3.9 items per 1,000m<sup>2</sup>)
- Miscellaneous objects (2.8 items per 1,000m<sup>2</sup>)
- Glass objects (0.6 items per 1,000m<sup>2</sup>)

Plastic objects contributed the largest litter volumes (3.51 litres per 1,000m<sup>2</sup>). The litter volumes of other materials in the litter stream at rural highway sites included:

- Paper/ paperboard objects (1.73 litres per 1,000m<sup>2</sup>)
- Metal objects (1.48 litres per 1,000m<sup>2</sup>)
- Miscellaneous objects (0.40 litres per 1,000m<sup>2</sup>)
- Glass objects (0.24 litres per 1,000m<sup>2</sup>)
- Cigarette butts (0.0012 litres per 1,000m<sup>2</sup>)

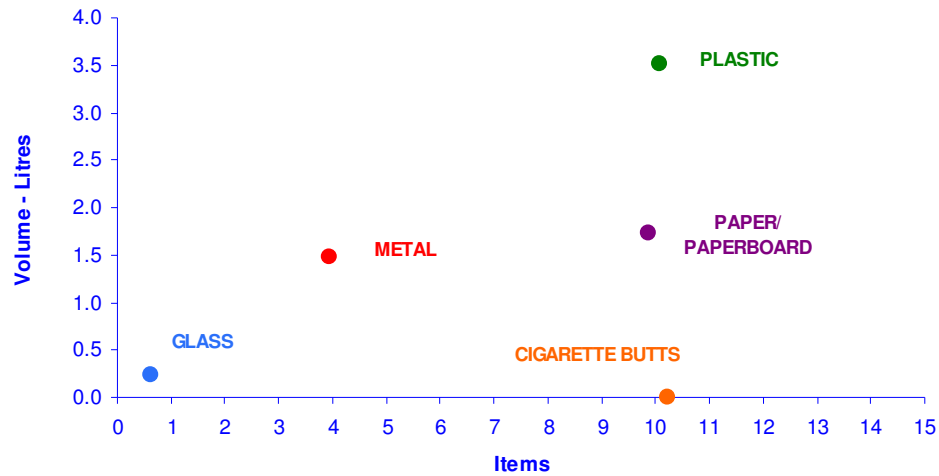
Items and Volume per 1000 Square Metres by Material Type  
QLD - RURAL HIGHWAYS - 2009/2010



Figures for items and volumes per 1,000m<sup>2</sup> across main material types identify the following characteristics of litter objects recorded among rural highway sites within Queensland during the year 2009/10:

- Plastic litter items contribute both a large number of items and large volumes to the litter stream
- Paper/ paperboard litter items contribute a large number of items and moderate volumes to the litter stream
- Metal items contribute both a moderate number of items and moderate volumes to the litter stream
- Cigarette butts were associated with a large number of litter items, but they contributed only a negligible volume to the overall litter stream
- Glass items contribute small numbers of items and low volumes to the litter stream

Items and Volume per 1000 Square Metres by Main Material Type  
QLD - RURAL HIGHWAYS - 2009/ 2010

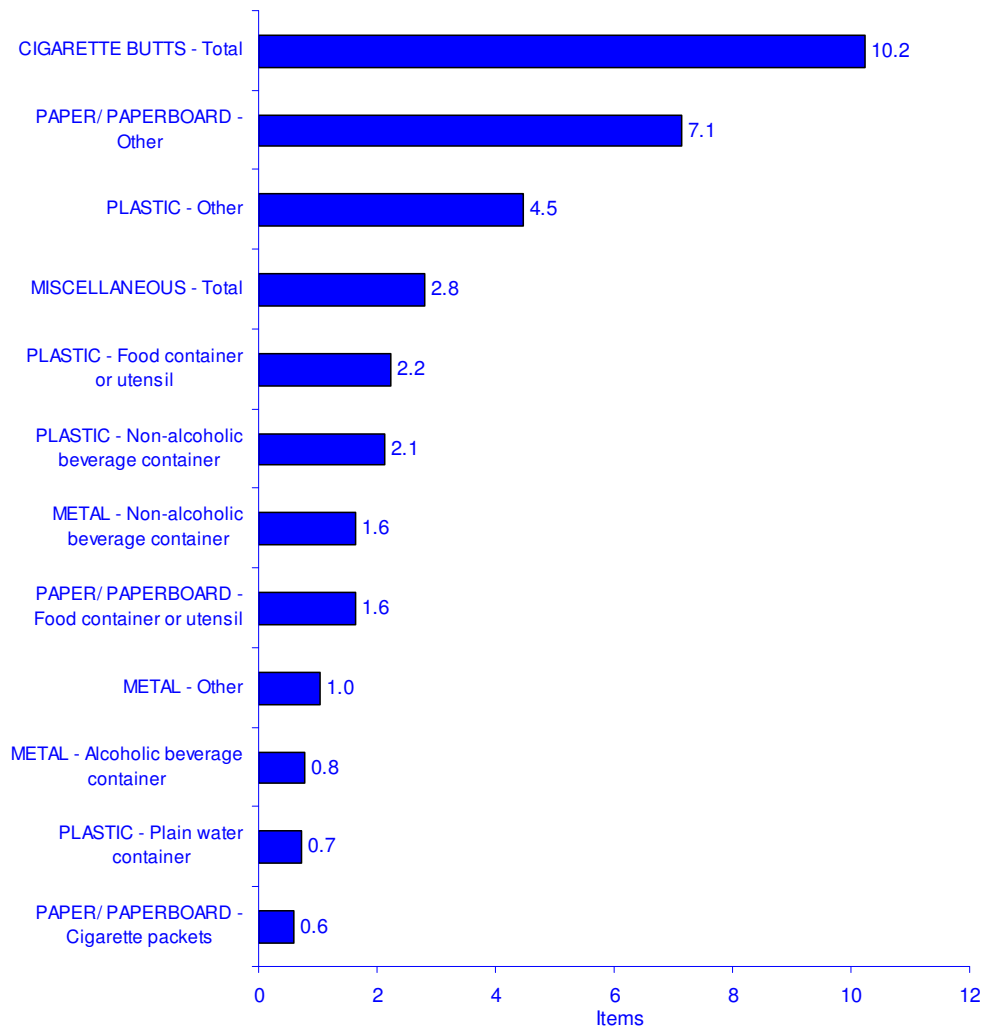


**The Dirty Dozen**

Within object type sub-categories, cigarette butts were the strongest contributor to the presence of litter objects at rural highway sites within Queensland, with 10.2 items per 1,000m<sup>2</sup> during the 2009/10 count. Other objects frequently identified included:

- Uncategorised paper/ paperboard objects (7.1 items per 1,000m<sup>2</sup>)
- Uncategorised plastic (4.5 items per 1,000m<sup>2</sup>)
- Miscellaneous items (2.8 items per 1,000m<sup>2</sup>)
- Plastic food container or utensil (2.2 items per 1,000m<sup>2</sup>)
- Plastic non-alcoholic beverage container (2.1 items per 1,000m<sup>2</sup>)

**Dirty Dozen - Items per 1000 Square Metres - Object Sub-Categories  
QLD - RURAL HIGHWAY SITES - 2009/ 2010**

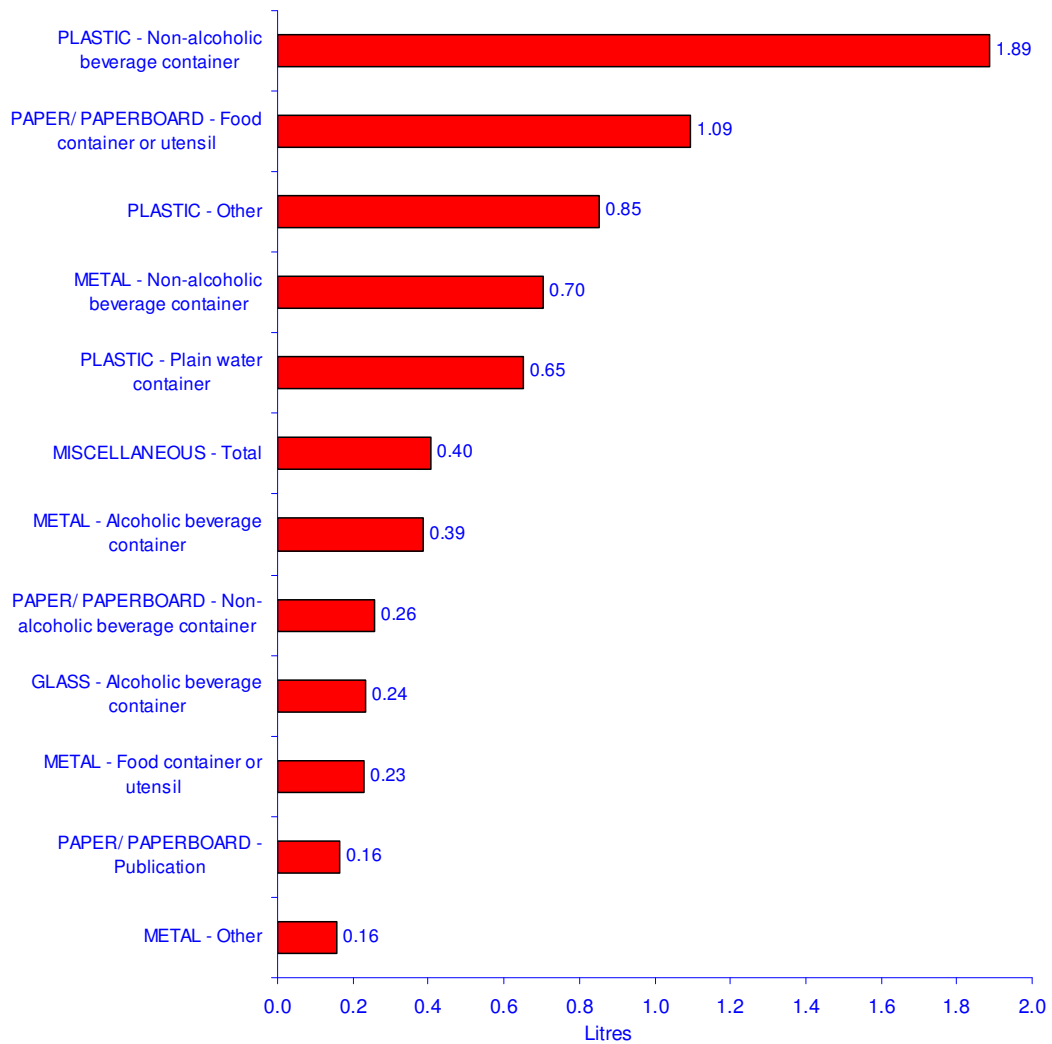


Plastic - non-alcoholic beverage containers represented the largest contribution to estimated litter volume among Queensland rural highway sites in 2009/10 (1.89 litres per 1,000m<sup>2</sup>). Other object sub-categories which were associated with higher estimated volume measurements included:

- Paper/ paperboard - food containers or utensils (1.09 litres per 1,000m<sup>2</sup>)
- Uncategorised plastic objects (0.85 litres per 1,000m<sup>2</sup>)

- Metal – non-alcoholic beverage containers (0.70 litres per 1,000m<sup>2</sup>)
- Plastic – plain water containers (0.65 litres per 1,000m<sup>2</sup>)

**Dirty Dozen - Volume per 1000 Square Metres - Object Sub-Categories  
QLD - RURAL HIGHWAY SITES - 2009/ 2010**



## 1.6

### South Australia

#### At a Glance

The overall average number of items per 1,000m<sup>2</sup> across the 8 rural highway sites surveyed within South Australia during the count for the year 2009/10 was 16.4, while the overall average estimated volume per 1,000m<sup>2</sup> was 3.60 litres.

Paper/ paperboard objects contributed the largest number of items (5.0 items per 1,000m<sup>2</sup>) and plastic objects contributed the largest volumes (1.83 litres per 1,000m<sup>2</sup>) to the litter stream among South Australian rural highway sites.

#### Comparison by Main Material Types

As outlined, paper/ paperboard objects contributed the largest number of items (5.0 items per 1,000m<sup>2</sup>) to the litter stream. The number of other material litter items at rural highway sites included:

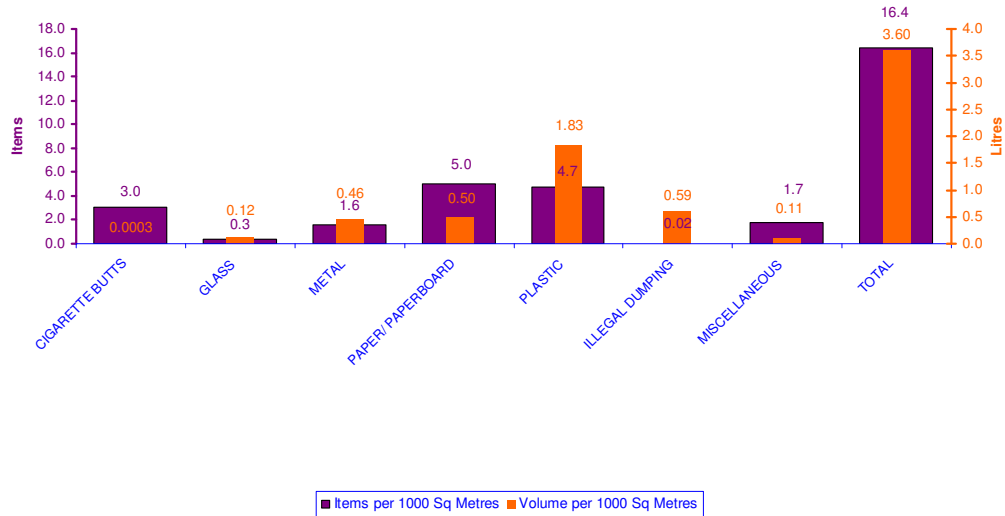
- Plastic objects (4.7 items per 1,000m<sup>2</sup>)
- Cigarette butts (3.0 items per 1,000m<sup>2</sup>)
- Miscellaneous objects (1.7 items per 1,000m<sup>2</sup>)
- Metal objects (1.6 items per 1,000m<sup>2</sup>)
- Glass objects (0.3 items per 1,000m<sup>2</sup>)
- Illegal dumping (0.02 items per 1,000m<sup>2</sup>)

Plastic objects contributed the largest litter volumes (1.83 litres per 1,000m<sup>2</sup>). The litter volumes of other materials in the litter stream at rural highway sites included:

- Illegal dumping (0.59 litres per 1,000m<sup>2</sup>)
- Paper/ paperboard objects (0.50 litres per 1,000m<sup>2</sup>)
- Metal objects (0.46 litres per 1,000m<sup>2</sup>)
- Glass objects (0.12 litres per 1,000m<sup>2</sup>)

- Miscellaneous objects (0.11 litres per 1,000m<sup>2</sup>)
- Cigarette butts (0.0003 litres per 1,000m<sup>2</sup>)

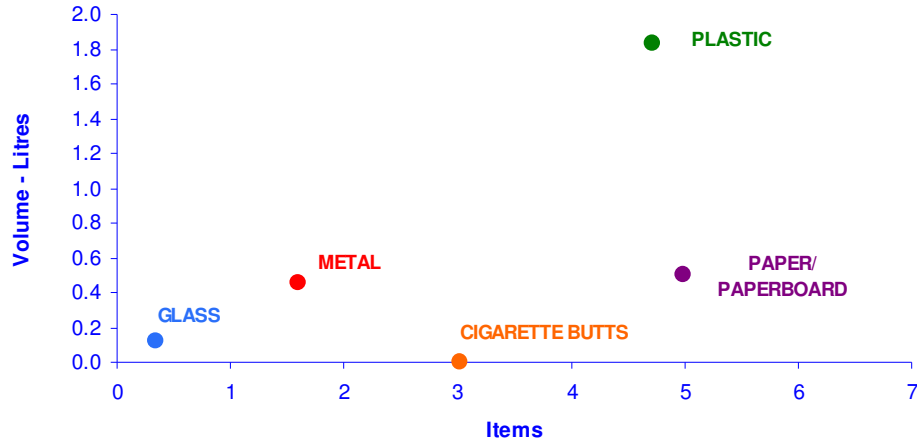
Items and Volume per 1000 Square Metres by Material Type  
SA - RURAL HIGHWAYS - 2009/2010



Figures for items and volumes per 1,000m<sup>2</sup> across main material types identify the following characteristics of litter objects recorded within South Australian rural highway sites during the year of 2009/10:

- Plastic litter items contribute both a large number of items and large volumes to the litter stream
- Paper/ paperboard litter items contribute a large number of items and low volumes to the litter stream
- Cigarette butts were associated with a moderate number of litter items, but they contributed only a negligible volume to the overall litter stream
- Metal and glass items contribute a small number of items and low volumes to the litter stream

Items and Volume per 1000 Square Metres by Main Material Type  
SA - RURAL HIGHWAYS - 2009/ 2010

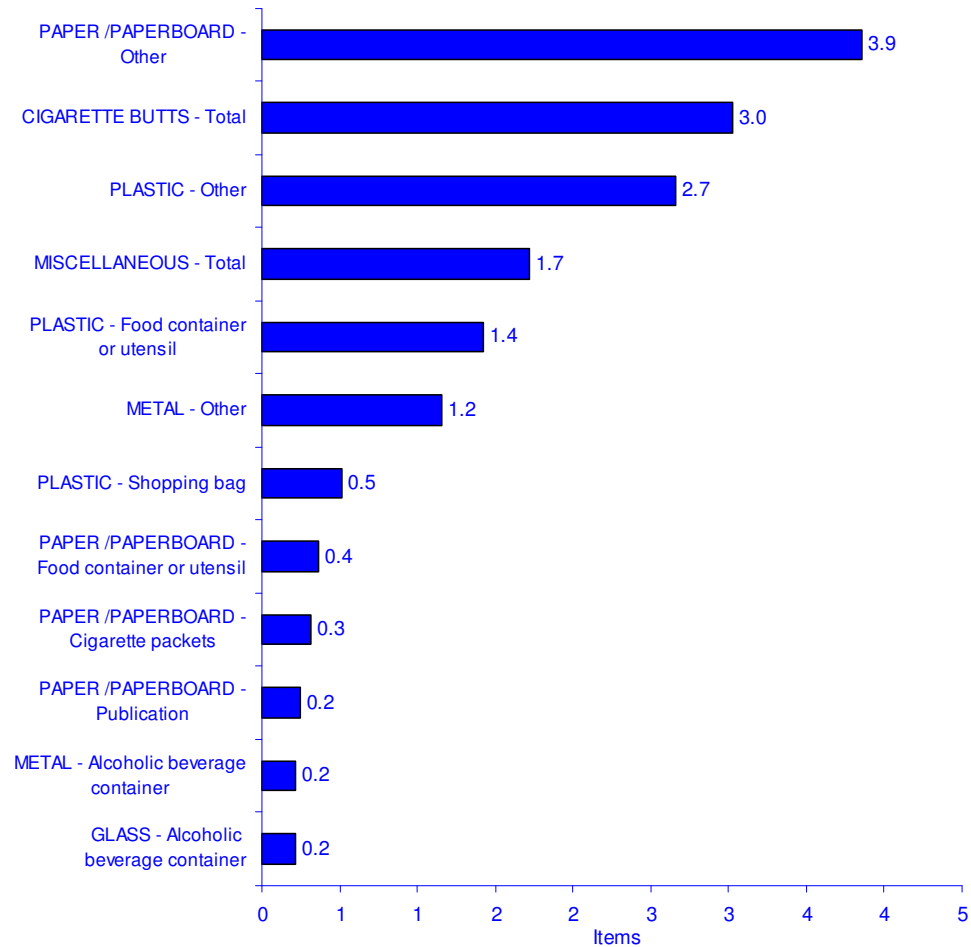


**The Dirty Dozen**

When partitioned according to object sub-type distinctions, uncategorised paper/ paperboard objects were the strongest contributor to the presence of litter objects at rural highway sites within South Australia, with 3.9 items per 1,000m<sup>2</sup> during the 2009/10 count. Other objects more frequently identified included:

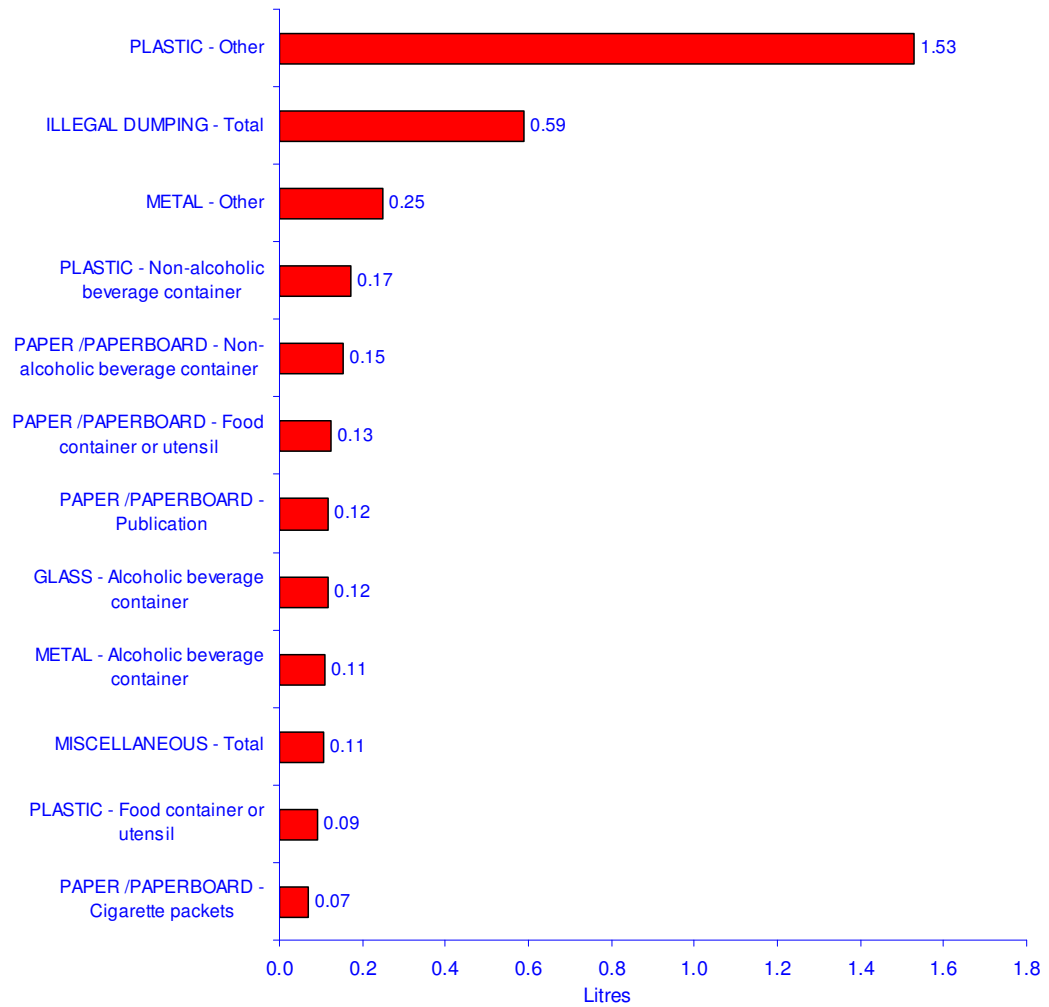
- Cigarette butts (3.0 items per 1,000m<sup>2</sup>)
- Uncategorised plastic items (2.7 items per 1,000m<sup>2</sup>)
- Uncategorised miscellaneous items (1.7 items per 1,000m<sup>2</sup>)
- Plastic food container or utensil (1.4 items per 1,000m<sup>2</sup>)
- Uncategorised metal items (1.2 items per 1,000m<sup>2</sup>)

**Dirty Dozen - Items per 1000 Square Metres - Object Sub-Categories  
SA - RURAL HIGHWAY SITES - 2009/ 2010**



The two items that represented the largest contribution to estimated litter volume among South Australian rural highways in 2009/10 were uncategorised plastic objects (1.53 litres per 1,000m<sup>2</sup>) and illegal dumped objects (0.59 litres per 1,000m<sup>2</sup>).

**Dirty Dozen - Volume per 1000 Square Metres - Object Sub-Categories SA -  
RURAL HIGHWAY SITES - 2009/ 2010**



## 1.7

## Tasmania

### At a Glance

The overall average number of items per 1,000m<sup>2</sup> across the 8 rural highway sites surveyed within Tasmania during the count for the year 2009/10 was 58.0, while the overall average estimated volume per 1,000m<sup>2</sup> was 23.02 litres.

Plastic objects contributed the largest number of items (17.4 items per 1,000m<sup>2</sup>) and also contributed the largest volumes (6.98 litres per 1,000m<sup>2</sup>) to the litter stream among Tasmanian rural highway sites.

### Comparison by Main Material Types

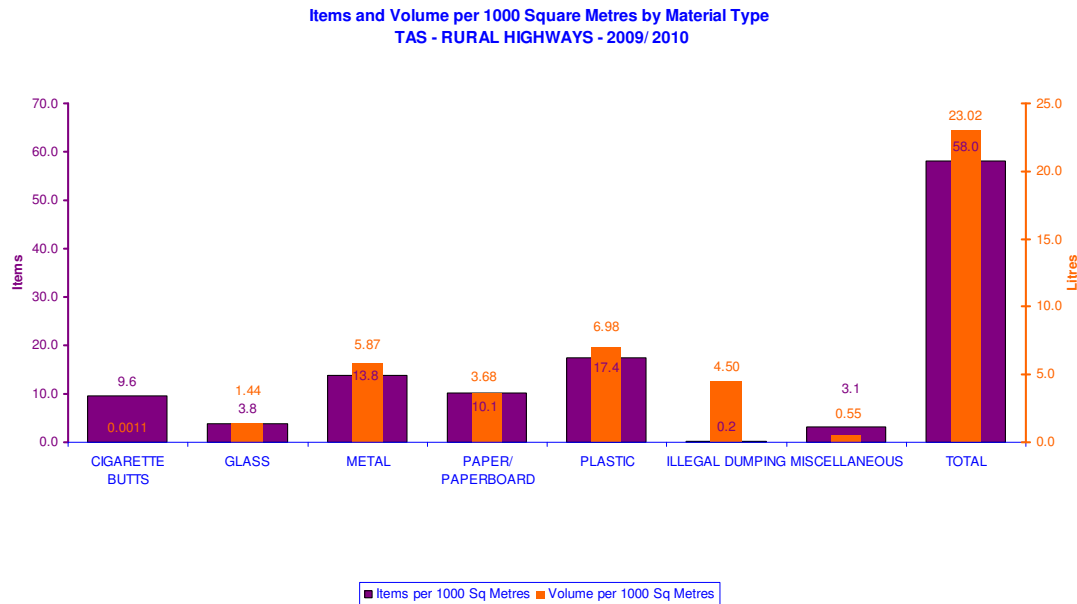
As outlined, plastic objects contributed the largest number of items (17.4 items per 1,000m<sup>2</sup>) to the litter stream. The number of other material litter items at rural highway sites included:

- Metal objects (13.8 items per 1,000m<sup>2</sup>)
- Paper/ paperboard objects (10.1 items per 1,000m<sup>2</sup>)
- Cigarette butts (9.6 items per 1,000m<sup>2</sup>)
- Glass objects (3.8 items per 1,000m<sup>2</sup>)
- Miscellaneous objects (3.1 items per 1,000m<sup>2</sup>)
- Illegal dumping (0.2 items per 1,000m<sup>2</sup>)

Plastic objects also contributed the largest litter volumes (6.98 litres per 1,000m<sup>2</sup>). The litter volumes of other materials in the litter stream at rural highway sites included:

- Metal objects (5.87 litres per 1,000m<sup>2</sup>)
- Illegal dumping (4.50 litres per 1,000m<sup>2</sup>)
- Paper/ paperboard objects (3.68 litres per 1,000m<sup>2</sup>)
- Glass objects (1.44 litres per 1,000m<sup>2</sup>)
- Miscellaneous objects (0.55 litres per 1,000m<sup>2</sup>)

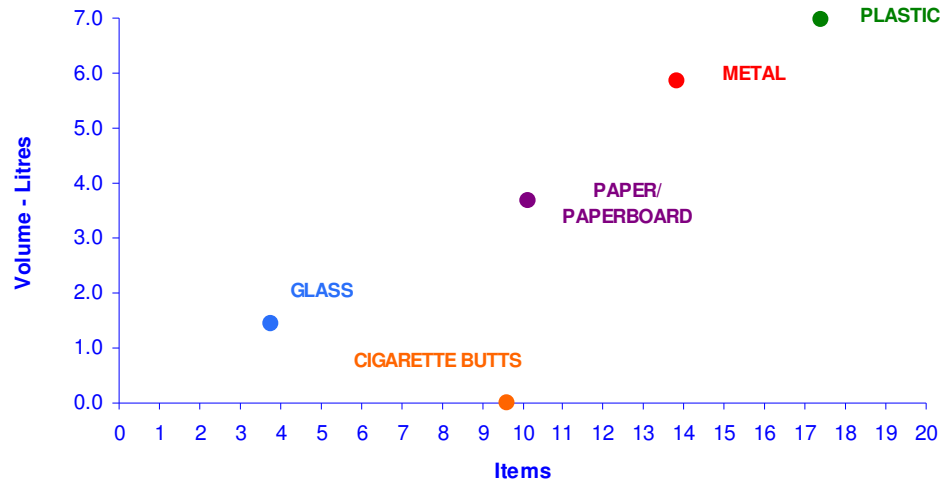
- Cigarette butts (0.0011 litres per 1,000m<sup>2</sup>)



Figures for items and volumes per 1,000m<sup>2</sup> across main material types identify the following characteristics of litter objects recorded within Tasmanian rural highway sites during the year of 2009/10:

- Plastic litter items contribute both a large number of items and large volumes to the litter stream
- Metal items contribute both a moderate to large number of items and moderate to large volumes to the litter stream
- Paper/ paperboard litter items contribute both a moderate number of items and moderate volumes to the litter stream
- Cigarette butts were associated with a moderate number of litter items, but they contributed only a negligible volume to the overall litter stream
- Glass items contribute a small number of items and low volumes to the litter stream

**Items and Volume per 1000 Square Metres by Main Material Type  
TAS - RURAL HIGHWAYS - 2009/ 2010**

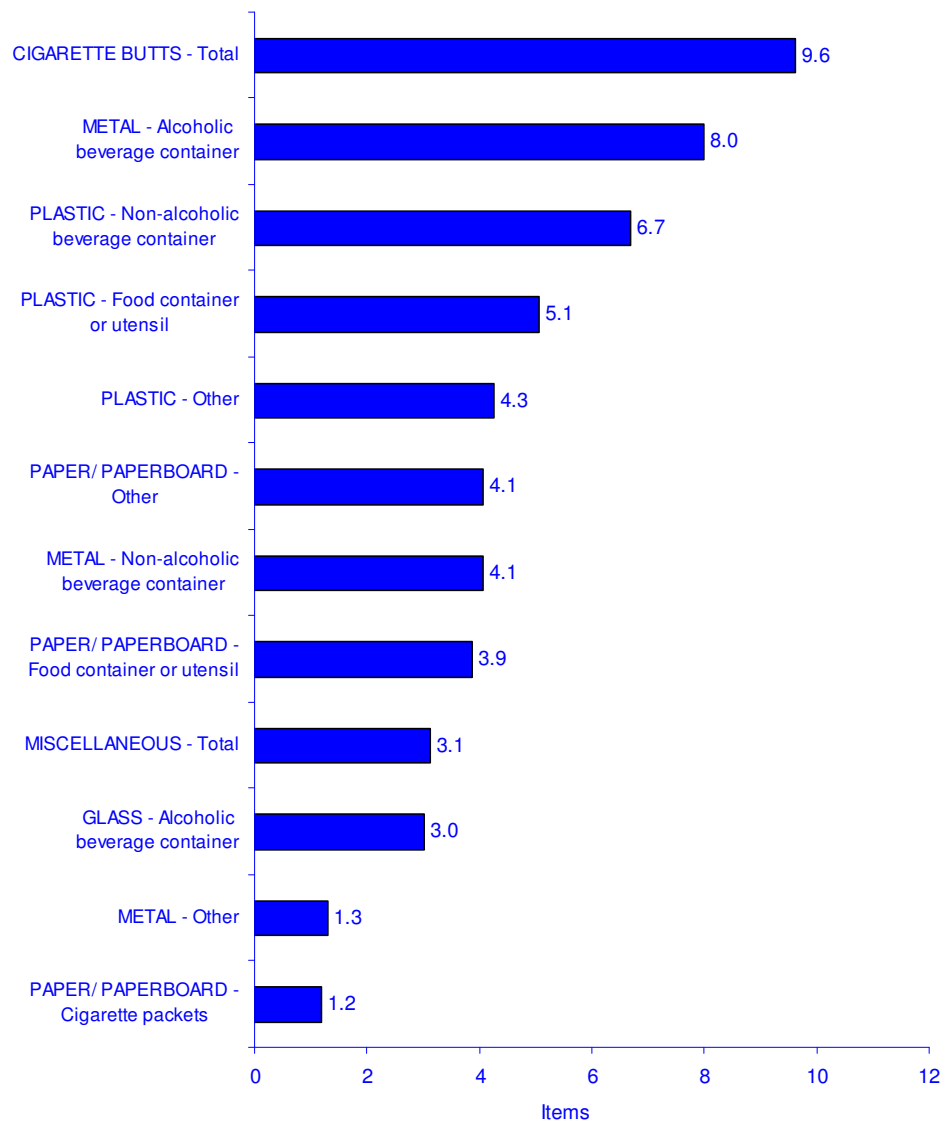


**The Dirty Dozen**

When partitioned according to object sub-type distinctions, cigarette butts were the strongest contributor to the presence of litter objects at rural highway sites within Tasmania, with 9.6 items per 1,000m<sup>2</sup> during the 2009/10 count. Other objects frequently identified included:

- Metal alcoholic beverage containers (8.0 items per 1,000m<sup>2</sup>)
- Plastic non-alcoholic beverage container (6.7 items per 1,000m<sup>2</sup>)
- Plastic food container or utensil (5.1 items per 1,000m<sup>2</sup>)
- Uncategorised plastic (4.3 items per 1,000m<sup>2</sup>)
- Uncategorised paper/ paperboard objects (4.1 items per 1,000m<sup>2</sup>)
- Metal non-alcoholic beverage containers (4.1 items per 1,000m<sup>2</sup>)
- Paper/ paperboard food container or utensil (3.9 items per 1,000m<sup>2</sup>)

**Dirty Dozen - Items per 1000 Square Metres - Object Sub-Categories  
TAS - RURAL HIGHWAY SITES - 2009/ 2010**

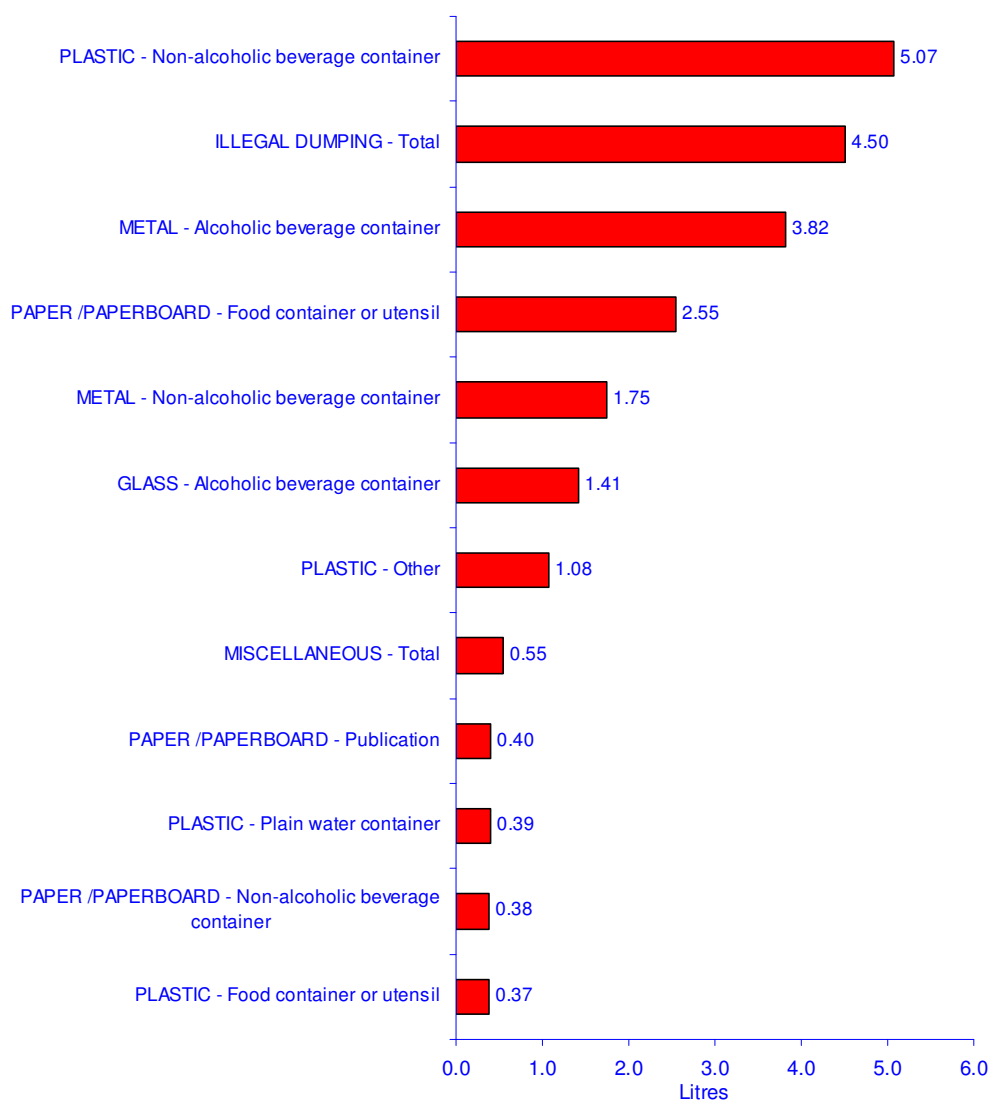


Plastic - non-alcoholic beverage containers represented the largest contribution to estimated litter volume among Tasmanian rural highway sites in 2009/10 (5.07 litres per 1,000m<sup>2</sup>). Other object sub-categories which were associated with higher estimated volume measurements included:

- Illegal dumping (4.50 litres per 1,000m<sup>2</sup>)
- Metal – alcoholic beverage containers (3.82 litres per 1,000m<sup>2</sup>)

- Paper/ paperboard – food containers or utensils (2.55 litres per 1,000m<sup>2</sup>)
- Metal – non-alcoholic beverage containers (1.75 litres per 1,000m<sup>2</sup>)
- Glass – alcoholic beverage containers (1.41 litres per 1,000m<sup>2</sup>)
- Uncategorised plastic objects (1.08 litres per 1,000m<sup>2</sup>)

**Dirty Dozen - Volume per 1000 Square Metres - Object Sub-Categories  
TAS - RURAL HIGHWAY SITES - 2009/ 2010**



## 1.8

## Victoria

### At a Glance

The overall average number of items per 1,000m<sup>2</sup> across the 15 rural highway sites surveyed within Victoria during the count for the year 2009/10 was 18.6, while the overall average estimated volume per 1,000m<sup>2</sup> was 1.54 litres.

Paper/ paperboard objects contributed the largest number of items (5.9 items per 1,000m<sup>2</sup>) and plastic objects contributed the largest volumes (0.49 litres per 1,000m<sup>2</sup>) to the litter stream among Victorian rural highway sites.

### Comparison by Main Material Types

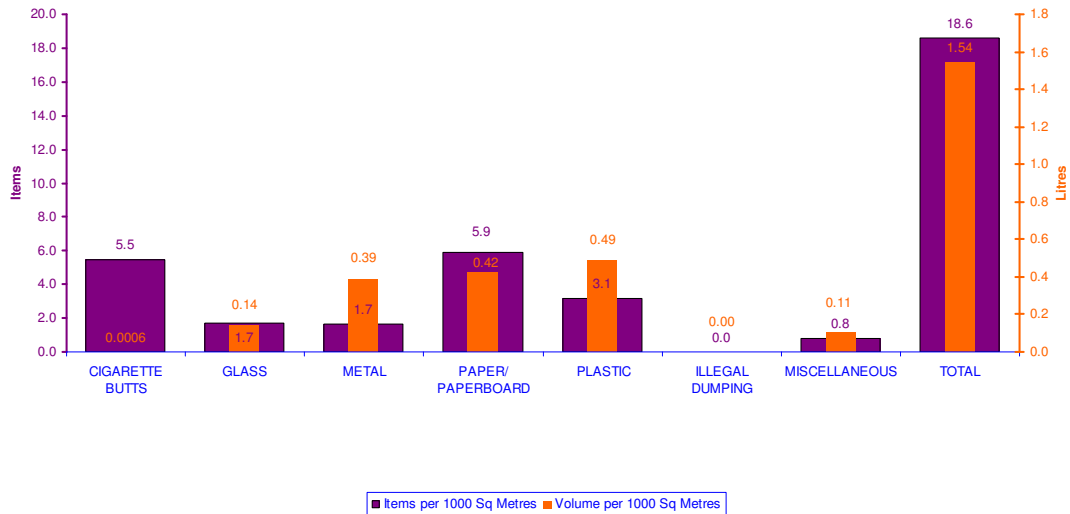
As outlined, paper/ paperboard objects contributed the largest number of items (5.9 items per 1,000m<sup>2</sup>) to the litter stream. The number of other material litter items at rural highway sites included:

- Cigarette butts (5.5 items per 1,000m<sup>2</sup>)
- Plastic objects (3.1 items per 1,000m<sup>2</sup>)
- Metal objects (1.7 items per 1,000m<sup>2</sup>)
- Glass objects (1.7 items per 1,000m<sup>2</sup>)
- Miscellaneous objects (0.8 items per 1,000m<sup>2</sup>)

Plastic objects contributed the largest litter volumes (0.49 litres per 1,000m<sup>2</sup>). The litter volumes of other materials in the litter stream at rural highway sites included:

- Paper/ paperboard objects (0.42 litres per 1,000m<sup>2</sup>)
- Metal objects (0.39 litres per 1,000m<sup>2</sup>)
- Glass objects (0.14 litres per 1,000m<sup>2</sup>)
- Miscellaneous objects (0.11 litres per 1,000m<sup>2</sup>)
- Cigarette butts (0.0006 litres per 1,000m<sup>2</sup>)

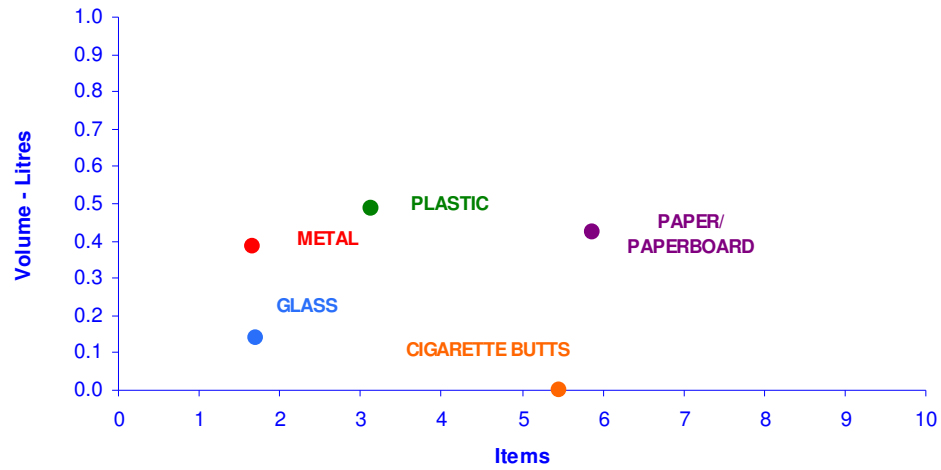
Items and Volume per 1000 Square Metres by Material Type  
VIC - RURAL HIGHWAYS - 2009/2010



Figures for items and volumes per 1,000m<sup>2</sup> across main material types identify the following characteristics of litter objects recorded among rural highway sites within Victoria during the year of 2009/10:

- Paper/ paperboard litter items contribute a large number of items and moderate to large volumes to the litter stream
- Plastic litter items contribute large volumes and a moderate number of items to the litter stream
- Cigarette butts were associated with a large number of litter items, but they contributed only a negligible volume to the overall litter stream
- Metal items contribute moderate to large volumes and a small number of items to the litter stream
- Glass items contribute a small number of items and low volumes to the litter stream

Items and Volume per 1000 Square Metres by Main Material Type  
VIC - RURAL HIGHWAYS - 2009/ 2010

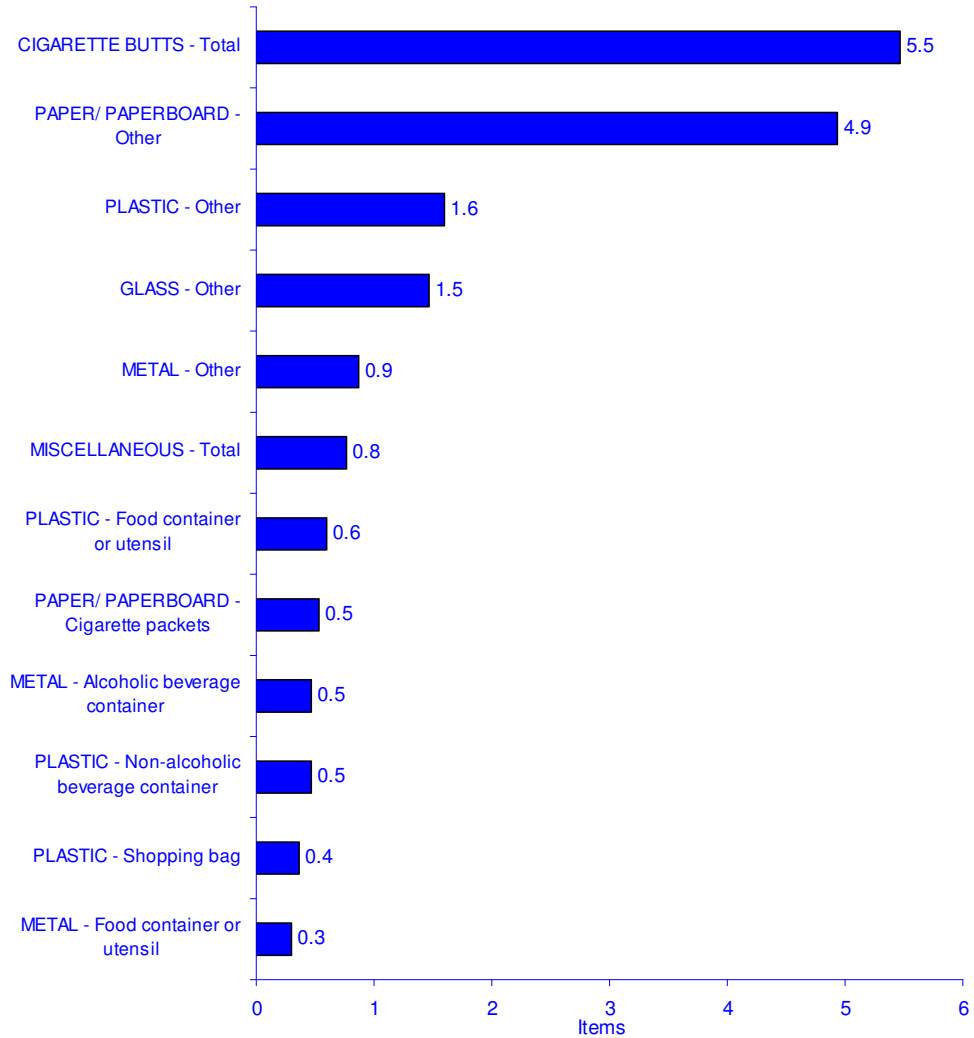


**The Dirty Dozen**

Within object type sub-categories, cigarette butts were the most frequently identified litter item at rural highway sites in Victoria, with 5.5 butts recorded per 1,000m<sup>2</sup> in 2009/10. Other objects also frequently identified in Victoria included:

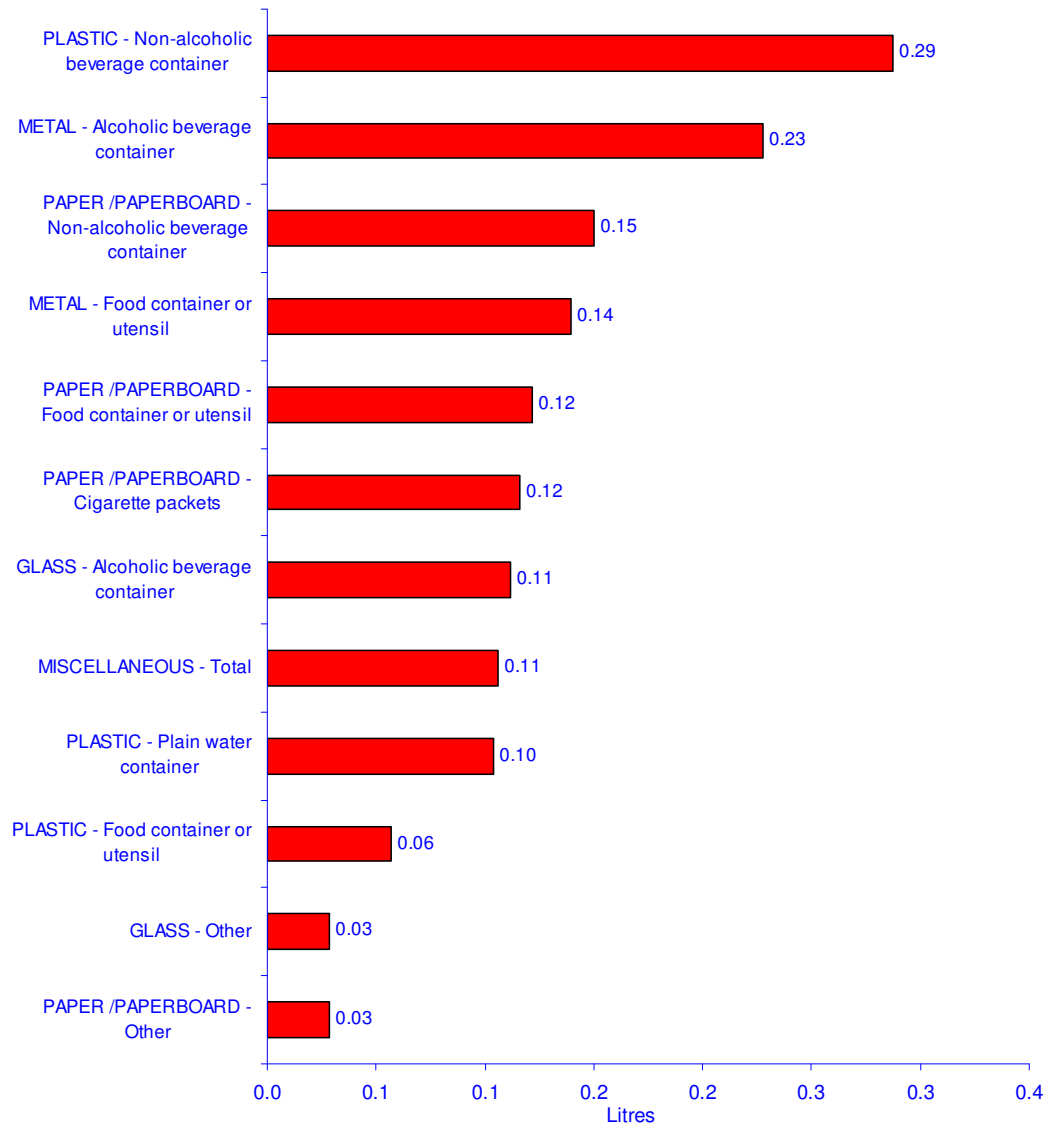
- Uncategorised paper/ paperboard objects (4.9 items per 1,000m<sup>2</sup>)
- Uncategorised plastic objects (1.6 items per 1,000m<sup>2</sup>)
- Uncategorised glass objects (1.5 items per 1,000m<sup>2</sup>)

**Dirty Dozen - Items per 1000 Square Metres - Object Sub-Categories  
VIC - RURAL HIGHWAY SITES - 2009/ 2010**



The two items that represented the largest contribution to estimated litter volume among Victorian rural highway sites in 2009/10 were plastic – non-alcoholic beverage containers (0.29 litres per 1,000m<sup>2</sup>) and metal alcoholic beverage containers (0.23 litres per 1,000m<sup>2</sup>).

**Dirty Dozen - Volume per 1000 Square Metres - Object Sub-Categories  
VIC - RURAL HIGHWAY SITES - 2009/ 2010**



## **1.9**

### **Western Australia**

#### **At a Glance**

The overall average number of items per 1,000m<sup>2</sup> across the 15 rural highway sites surveyed within Western Australia during the count for the year 2009/10 was 36.0, while the overall average estimated volume per 1,000m<sup>2</sup> was 14.60 litres.

Plastic objects contributed both the largest number of items (11.4 items per 1,000m<sup>2</sup>) and the largest volumes (5.89 litres per 1,000m<sup>2</sup>) to the litter stream among Western Australian rural highway sites.

#### **Comparison by Main Material Types**

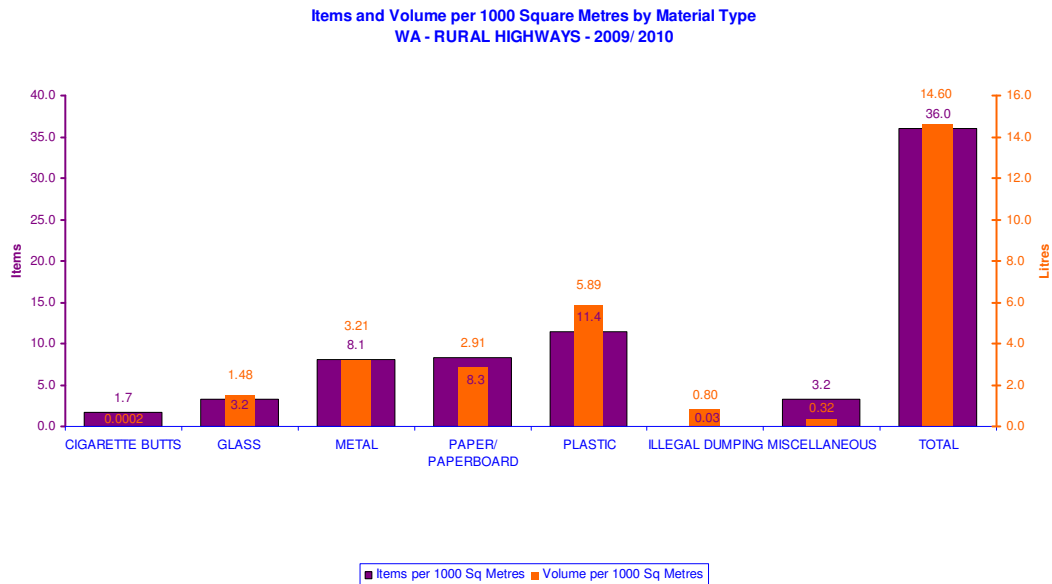
As outlined, plastic objects contributed the largest number of items (11.4 items per 1,000m<sup>2</sup>) to the litter stream. The number of other material litter items at rural highway sites included:

- Paper/ paperboard objects (8.3 items per 1,000m<sup>2</sup>)
- Metal objects (8.1 items per 1,000m<sup>2</sup>)
- Glass objects (3.2 items per 1,000m<sup>2</sup>)
- Miscellaneous objects (3.2 items per 1,000m<sup>2</sup>)
- Cigarette butts (1.7 items per 1,000m<sup>2</sup>)
- Illegal dumping (0.03 items per 1,000m<sup>2</sup>)

Plastic objects also contributed the largest litter volumes (5.89 litres per 1,000m<sup>2</sup>). The litter volumes of other materials in the litter stream at rural highway sites included:

- Metal objects (3.21 litres per 1,000m<sup>2</sup>)
- Paper/ paperboard objects (2.91 litres per 1,000m<sup>2</sup>)
- Glass objects (1.48 litres per 1,000m<sup>2</sup>)
- Illegal dumping (0.80 litres per 1,000m<sup>2</sup>)
- Miscellaneous objects (0.32 litres per 1,000m<sup>2</sup>)

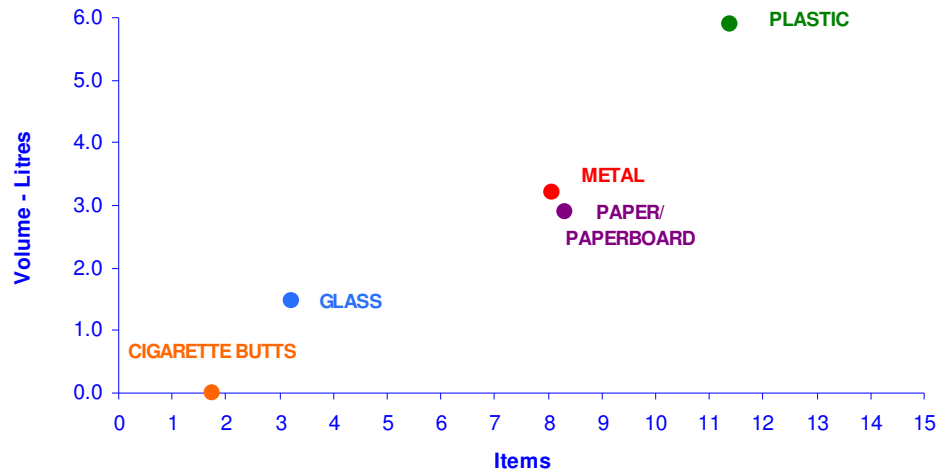
- Cigarette butts (0.0002 litres per 1,000m<sup>2</sup>)



Figures for items and volumes per 1,000m<sup>2</sup> across main material types identify the following characteristics of litter objects recorded among rural highway sites within Western Australia during the year of 2009/ 2010:

- Plastic litter items contribute both a large number of items and large volumes to the litter stream
- Metal and paper/ paperboard objects contribute both a moderate number of items and moderate volumes to the litter stream
- Glass items contribute a small number of items and low volumes to the litter stream
- Cigarette butts contribute a small number of items and only a negligible estimated volume to the overall litter stream

Items and Volume per 1000 Square Metres by Main Material Type  
WA - RURAL HIGHWAYS - 2009/ 2010

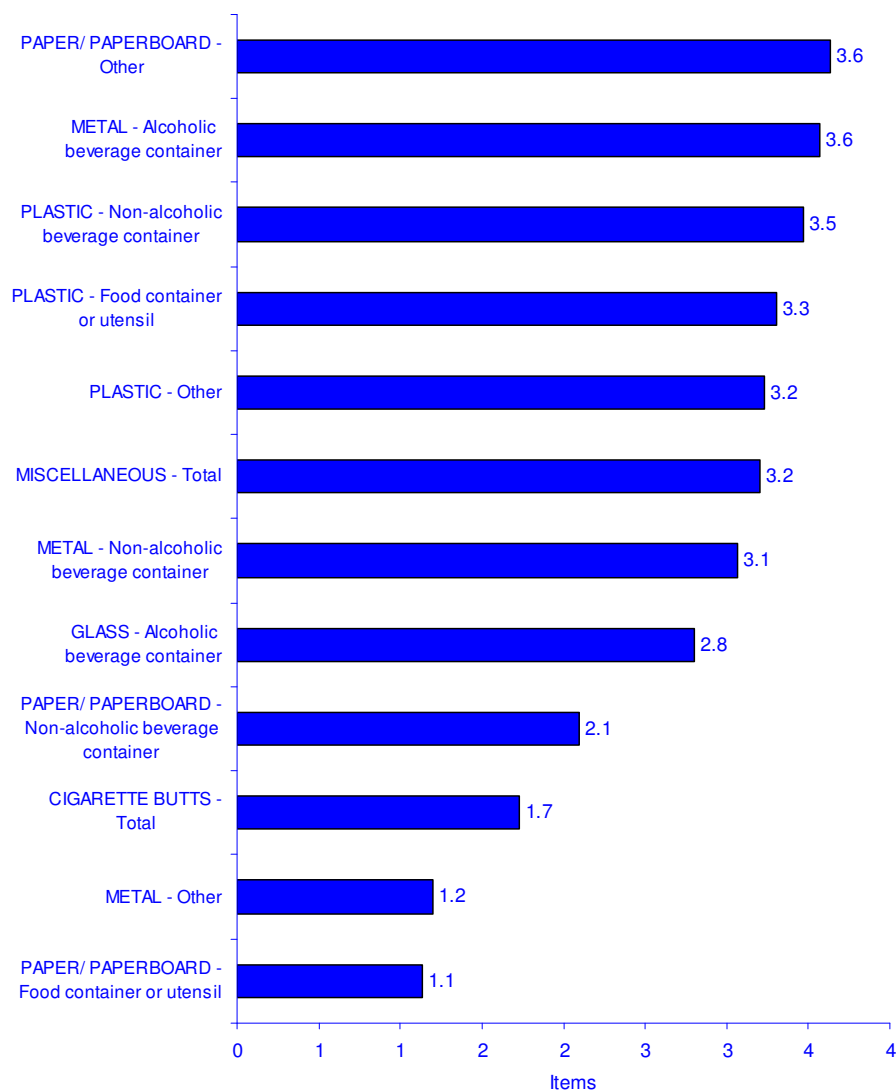


**The Dirty Dozen**

When partitioned according to object sub-type distinctions, uncategorised paper/ paperboard objects and metal alcoholic beverage containers were the strongest contributors to the presence of litter objects at rural highway sites within Western Australia, with 3.6 items per 1,000m<sup>2</sup> during the 2009/10 count. Other objects frequently identified included:

- Plastic non-alcoholic beverage container (3.5 items per 1,000m<sup>2</sup>)
- Plastic food container or utensil (3.3 items per 1,000m<sup>2</sup>)
- Uncategorised plastic (3.2 items per 1,000m<sup>2</sup>)
- Miscellaneous items (3.2 items per 1,000m<sup>2</sup>)
- Metal non-alcoholic beverage containers (3.1 items per 1,000m<sup>2</sup>)
- Glass alcoholic beverage container (2.8 items per 1,000m<sup>2</sup>)

**Dirty Dozen - Items per 1000 Square Metres - Object Sub-Categories  
WA - RURAL HIGHWAY SITES - 2009/ 2010**

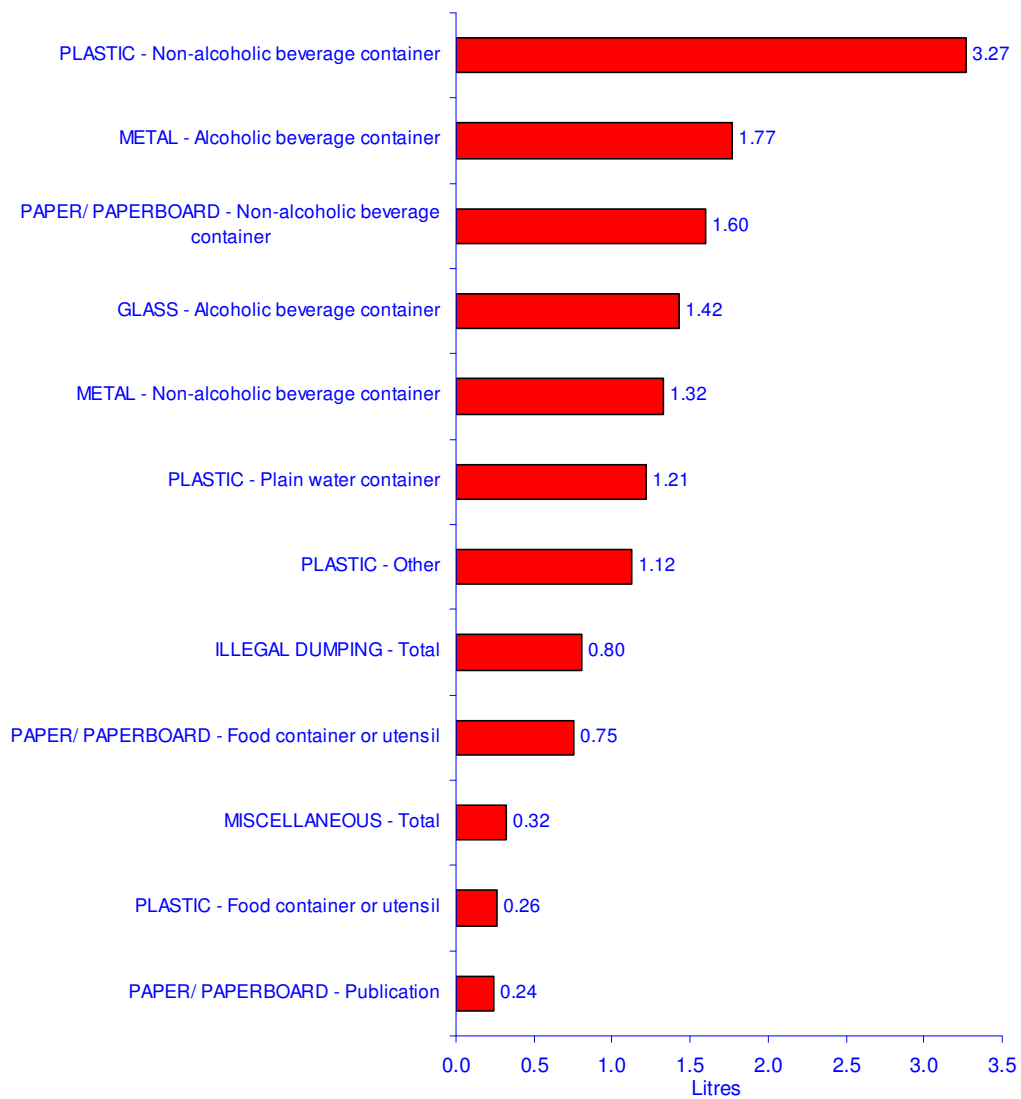


Plastic - non-alcoholic beverage containers represented the largest contribution to estimated litter volume among Western Australian rural highway sites in 2009/10 (3.27 litres per 1,000m<sup>2</sup>). Other object sub-categories which were associated with higher estimated volume measurements included:

- Metal – alcoholic beverage containers (1.77 litres per 1,000m<sup>2</sup>)
- Paper/ paperboard – non-alcoholic beverage containers (1.60 litres per 1,000m<sup>2</sup>)

- Glass – alcoholic beverage containers (1.42 litres per 1,000m<sup>2</sup>)
- Metal – non-alcoholic beverage containers (1.32 litres per 1,000m<sup>2</sup>)
- Plastic plain water containers (1.21 litres per 1,000m<sup>2</sup>)
- Uncategorised plastic objects (1.12 litres per 1,000m<sup>2</sup>)
- Illegal dumping (0.80 litres per 1,000m<sup>2</sup>)

**Dirty Dozen - Volume per 1000 Square Metres - Object Sub-Categories  
WA - RURAL HIGHWAY SITES - 2009/ 2010**



# *Appendix 1: Results Tables*

NATIONAL - MAY 2010		Items per 1,000m <sup>2</sup>							
		NSW	NT	QLD	SA	TAS	VIC	WA	Total
<b>CIGARETTE BUTTS</b>		<b>12.3</b>	<b>13.6</b>	<b>10.2</b>	<b>3.0</b>	<b>9.6</b>	<b>5.5</b>	<b>1.7</b>	<b>7.2</b>
GLASS	Alcoholic sodas / spirit-based mixers, all sizes	0.1	0.1	0.1	0.1	0.4	0.0	0.4	0.1
	Beer, all colours of glass, <750ml	0.5	3.5	0.3	0.1	2.3	0.2	2.0	1.0
	Beer, all colours of glass, 750ml+	0.3	0.1	0.1	0.0	0.0	0.0	0.4	0.1
	Cider/fruit based etc.	0.0	0.0	0.0	0.0	0.3	0.0	0.0	0.0
	Flav.wtr/fruit j. dr/sprts dr, (non-carb), <1 litre	0.2	0.1	0.0	0.0	0.0	0.0	0.0	0.0
	Flav.wtr/fruit j. dr/sprts dr, (non-carb), 1 litre+	0.1	0.0	0.0	0.0	0.0	0.0	0.0	0.0
	Flav. water/soft drink (carbonated) <1 litre	0.0	0.0	0.0	0.0	0.1	0.0	0.0	0.0
	Flav. water/soft drink (carbonated) 1 litre+	0.0	0.0	0.0	0.0	0.0	0.0	0.0	0.0
	Fruit juice, < 1 litre	0.0	0.0	0.0	0.0	0.0	0.0	0.0	0.0
	Fruit juice, 1 litre+	0.0	0.0	0.0	0.0	0.0	0.0	0.0	0.0
	Other glass	2.4	0.5	0.2	0.1	0.7	1.5	0.3	0.8
	Plain water (carbonated or non-carb.), <1 litre	0.2	0.1	0.0	0.0	0.0	0.0	0.0	0.0
	Plain water (carbonated or non-carb.), 1 litre+	0.0	0.0	0.0	0.0	0.0	0.0	0.0	0.0
	Wine & spirit, all sizes	0.0	0.0	0.0	0.0	0.1	0.0	0.0	0.0
	Wine cooler, all sizes	0.0	0.0	0.0	0.0	0.1	0.0	0.0	0.0
<b>Total</b>	<b>3.7</b>	<b>4.3</b>	<b>0.6</b>	<b>0.3</b>	<b>3.8</b>	<b>1.7</b>	<b>3.2</b>	<b>2.2</b>	
<b>ILLEGAL DUMPING</b>		<b>0.0</b>	<b>0.0</b>	<b>0.0</b>	<b>0.0</b>	<b>0.2</b>	<b>0.0</b>	<b>0.0</b>	<b>0.0</b>
METAL	Aerosols - pressure packs	0.0	0.0	0.0	0.0	0.1	0.0	0.0	0.0
	Alcoholic sodas & spirit-based mixers	0.6	0.8	0.4	0.1	2.8	0.2	1.8	0.8
	Beer, aluminium, all types, all sizes	0.7	2.0	0.3	0.1	5.2	0.3	1.8	1.1
	Cider/fruit based etc.	0.0	0.0	0.0	0.0	0.0	0.0	0.0	0.0
	Flav. water/soft drink, (carbonated), all sizes	1.6	2.4	1.6	0.1	4.1	0.0	3.1	1.5
	Flav. water/soft drink, (non-carb), all sizes	0.4	0.3	0.0	0.0	0.0	0.0	0.0	0.1
	Foil take away	0.4	0.0	0.5	0.1	0.4	0.0	0.1	0.2
	Food cans (including pet food)	0.0	0.1	0.0	0.0	0.0	0.3	0.1	0.1
	Industrial cans - all types	0.0	0.0	0.0	0.0	0.0	0.0	0.0	0.0
	Metal bottle tops and can pull rings	0.4	6.9	0.2	0.3	0.6	0.5	0.2	0.9
	Metal pieces	0.2	0.9	0.2	0.4	0.4	0.3	0.4	0.4
	Other foil	0.8	0.1	0.7	0.3	0.1	0.0	0.5	0.4
	<b>Total</b>	<b>5.2</b>	<b>13.5</b>	<b>3.9</b>	<b>1.6</b>	<b>13.8</b>	<b>1.7</b>	<b>8.1</b>	<b>5.5</b>

NATIONAL - MAY 2010		Items per 1,000m <sup>2</sup>							
		NSW	NT	QLD	SA	TAS	VIC	WA	Total
MISCELLANEOUS	Clothing & materials	0.3	0.2	0.7	0.3	1.1	0.3	1.6	0.6
	Condoms	0.0	0.1	0.0	0.0	0.0	0.0	0.0	0.0
	Construction materials	0.4	1.0	0.8	0.1	1.0	0.1	0.5	0.5
	Disposable nappies	0.0	0.0	0.0	0.0	0.0	0.0	0.0	0.0
	Ice cream sticks	0.0	0.0	0.0	0.0	0.0	0.0	0.0	0.0
	Other miscellaneous	0.5	0.6	0.4	0.8	0.2	0.1	0.5	0.5
	Rubber pieces (not tyres)	0.3	0.3	0.4	0.3	0.1	0.0	0.1	0.2
	Syringes	0.0	0.4	0.0	0.0	0.0	0.0	0.0	0.0
	Tyres & pieces	0.3	14.5	0.5	0.2	0.8	0.2	0.5	1.5
<b>Total</b>	<b>1.8</b>	<b>17.1</b>	<b>2.8</b>	<b>1.7</b>	<b>3.1</b>	<b>0.8</b>	<b>3.2</b>	<b>3.4</b>	
PAPER/PAPERBOARD	Cartons, flavoured milk < 1 litre	0.2	0.6	0.2	0.2	0.3	0.2	1.8	0.5
	Cartons, flavoured milk 1 litre+	0.0	0.0	0.0	0.0	0.0	0.0	0.0	0.0
	Cartons, fruit juice, < 1 litre	0.1	0.0	0.0	0.0	0.1	0.0	0.0	0.0
	Cartons, fruit juice, 1 litre+	0.0	0.0	0.0	0.0	0.0	0.0	0.0	0.0
	Cartons, milk, plain (white) all sizes	0.1	0.1	0.0	0.0	0.1	0.0	0.2	0.1
	Cigarette packets	1.3	0.4	0.6	0.3	1.2	0.5	1.0	0.7
	Cups/take away containers	2.2	0.2	1.5	0.2	3.5	0.2	1.0	1.1
	Flav. water/fruit j. drink/sports drink, non-carb, <1 litre	0.1	0.3	0.1	0.0	0.0	0.0	0.1	0.1
	Flav. water / fruit j. drink/ sports drink, (non-carb), 1 litre+	0.0	0.0	0.0	0.0	0.0	0.0	0.0	0.0
	Ice cream wrappers	0.1	0.1	0.1	0.2	0.4	0.0	0.1	0.1
	Junk mail / free circulars	0.3	0.1	0.0	0.2	0.2	0.0	0.3	0.2
	Newspapers & magazines	0.3	0.3	0.1	0.1	0.3	0.0	0.2	0.2
	Other paper	3.1	15.0	5.3	3.4	2.3	4.6	1.8	4.5
	Packages & boxes	0.8	0.8	0.7	0.2	0.9	0.1	1.0	0.6
	Paper bags	0.9	3.4	0.6	0.1	0.6	0.2	0.8	0.8
	Shopper dockets & related shopping paper (eg, lists)	0.0	0.0	0.4	0.0	0.1	0.0	0.1	0.1
	Tickets, e.g. bus, ATM, vending machine etc.	0.0	0.0	0.1	0.0	0.1	0.0	0.0	0.0
<b>Total</b>	<b>9.6</b>	<b>21.3</b>	<b>9.9</b>	<b>5.0</b>	<b>10.1</b>	<b>5.9</b>	<b>8.3</b>	<b>8.9</b>	

NATIONAL - MAY 2010		Items per 1,000m <sup>2</sup>							
		NSW	NT	QLD	SA	TAS	VIC	WA	Total
PLASTIC	6 ring can holders	0.0	0.0	0.0	0.0	0.1	0.0	0.0	0.0
	Bags - heavier glossy typically branded carry bags	0.0	0.1	0.1	0.1	0.2	0.0	0.3	0.1
	Bags - supermarket type light weight carry bags	0.3	0.1	0.4	0.4	0.7	0.4	0.2	0.3
	Bread bag tags	0.0	0.0	0.0	0.1	0.0	0.1	0.0	0.0
	Containers, domestic type	0.1	0.1	0.1	0.0	0.1	0.0	0.1	0.1
	Containers, industrial e.g. oil	0.0	0.0	0.0	0.0	0.0	0.0	0.0	0.0
	Drink pouches	0.0	0.0	0.0	0.0	0.0	0.0	0.0	0.0
	Flav. milk, <1 litre	0.1	0.0	0.9	0.0	1.9	0.0	0.2	0.3
	Flav. milk, 1 litre+	0.0	0.0	0.1	0.0	0.1	0.0	0.2	0.1
	Flav.wtr/fruit j. dr, sprts dr etc.(non-carb) <1 litre	0.3	0.3	0.1	0.0	0.3	0.0	0.4	0.2
	Flav. wtr/fruit j. dr, sprts dr etc.(non-carb) 1 litre+	0.2	0.1	0.0	0.0	0.1	0.0	0.3	0.1
	Flav. water/soft drink (carbonated) <1 litre	0.9	0.6	0.6	0.0	3.3	0.4	1.7	0.9
	Flav. water/soft drink (carbonated) 1 litre+	0.0	0.1	0.3	0.0	0.6	0.0	0.2	0.1
	Fruit juice <1 litre	0.0	0.0	0.1	0.0	0.3	0.0	0.2	0.1
	Fruit juice, 1 litre+	0.0	0.0	0.0	0.0	0.1	0.0	0.2	0.0
	Lollipop sticks	0.1	0.0	0.1	0.1	0.1	0.0	0.1	0.1
	Other plastic	1.9	16.8	2.5	1.7	1.7	0.4	2.2	3.0
	Packing tape & straps	0.5	0.8	0.5	0.1	0.6	0.3	0.2	0.4
	Plain water (carbonated or non-carb) <1 litre	0.1	0.1	0.6	0.0	0.4	0.1	0.4	0.2
	Plain water (carbonated or non-carb) 1 litre+	0.0	0.1	0.1	0.0	0.1	0.0	0.6	0.1
	Plastic bottle tops	0.7	0.6	0.8	0.2	0.4	0.1	0.2	0.4
	Sacks - sheeting - other bags	0.0	0.0	0.3	0.0	0.4	0.0	0.3	0.1
	Snack bags & confectionary wrappers	0.9	1.4	1.1	0.3	2.7	0.0	1.4	0.9
	Spoons/ cutlery	0.3	0.0	0.1	0.2	0.1	0.0	0.3	0.2
	Straws	1.2	0.1	0.4	0.4	0.5	0.3	0.4	0.5
	Styrene foam boxes, sheets, etc	0.1	1.3	0.3	0.3	0.9	0.7	0.2	0.5
	Take away & cups	0.1	0.3	0.4	0.4	1.7	0.3	1.2	0.6
	White milk, all sizes	0.0	0.0	0.1	0.1	0.1	0.0	0.0	0.0
	Wine cask bladders	0.0	0.0	0.0	0.0	0.1	0.0	0.0	0.0
	<b>Total</b>	<b>7.9</b>	<b>22.8</b>	<b>10.1</b>	<b>4.7</b>	<b>17.4</b>	<b>3.1</b>	<b>11.4</b>	<b>9.4</b>
<b>GRAND TOTAL</b>	<b>40.6</b>	<b>92.5</b>	<b>37.5</b>	<b>16.4</b>	<b>58.0</b>	<b>18.6</b>	<b>36.0</b>	<b>36.6</b>	

NATIONAL - MAY 2010		Volume - Litres per 1,000m <sup>2</sup>							
		NSW	NT	QLD	SA	TAS	VIC	WA	Total
<b>CIGARETTE BUTTS</b>		<b>0.0014</b>	<b>0.0016</b>	<b>0.0012</b>	<b>0.0003</b>	<b>0.0011</b>	<b>0.0006</b>	<b>0.0002</b>	<b>0.0008</b>
GLASS	Alcoholic sodas / spirit-based mixers, all sizes	0.0250	0.0468	0.0374	0.0276	0.1404	0.0000	0.1372	<b>0.0525</b>
	Beer, all colours of glass, <750ml	0.2398	1.6783	0.1439	0.0354	1.0789	0.1119	0.9750	<b>0.4654</b>
	Beer, all colours of glass, 750ml+	0.2701	0.0506	0.0540	0.0199	0.0000	0.0000	0.2971	<b>0.1051</b>
	Cider/fruit based etc.	0.0000	0.0000	0.0000	0.0112	0.1136	0.0000	0.0151	<b>0.0141</b>
	Flav.wtr/fruit j. dr/sprts dr, (non-carb), <1 litre	0.1351	0.0506	0.0000	0.0000	0.0000	0.0000	0.0270	<b>0.0294</b>
	Flav.wtr/fruit j. dr/sprts dr, (non-carb), 1 litre+	0.1103	0.0000	0.0000	0.0000	0.0000	0.0000	0.0000	<b>0.0172</b>
	Flav. water/soft drink (carbonated) <1 litre	0.0100	0.0000	0.0000	0.0000	0.0188	0.0000	0.0100	<b>0.0047</b>
	Flav. water/soft drink (carbonated) 1 litre+	0.0000	0.0000	0.0000	0.0000	0.0000	0.0000	0.0000	<b>0.0000</b>
	Fruit juice, < 1 litre	0.0000	0.0000	0.0000	0.0000	0.0000	0.0000	0.0095	<b>0.0015</b>
	Fruit juice, 1 litre+	0.0000	0.0000	0.0000	0.0000	0.0000	0.0000	0.0000	<b>0.0000</b>
	Other glass	0.0471	0.0098	0.0033	0.0024	0.0135	0.0288	0.0065	<b>0.0158</b>
	Plain water (carbonated or non-carb.), <1 litre	0.0691	0.0259	0.0000	0.0000	0.0000	0.0000	0.0000	<b>0.0129</b>
	Plain water (carbonated or non-carb.), 1 litre+	0.0000	0.0000	0.0000	0.0000	0.0000	0.0000	0.0000	<b>0.0000</b>
	Wine & spirit, all sizes	0.0000	0.0000	0.0000	0.0219	0.0557	0.0000	0.0000	<b>0.0093</b>
Wine cooler, all sizes	0.0000	0.0000	0.0000	0.0000	0.0234	0.0000	0.0000	<b>0.0019</b>	
<b>Total</b>	<b>0.9064</b>	<b>1.8621</b>	<b>0.2386</b>	<b>0.1184</b>	<b>1.4442</b>	<b>0.1407</b>	<b>1.4775</b>	<b>0.7298</b>	
<b>ILLEGAL DUMPING</b>		<b>0.0000</b>	<b>0.0000</b>	<b>0.0000</b>	<b>0.5902</b>	<b>4.5000</b>	<b>0.0000</b>	<b>0.8000</b>	<b>0.6228</b>
METAL	Aerosols - pressure packs	0.0228	0.0000	0.0000	0.0168	0.0855	0.0000	0.0000	<b>0.0142</b>
	Alcoholic sodas & spirit-based mixers	0.3559	0.4565	0.2435	0.0553	1.5803	0.1124	1.0114	<b>0.4491</b>
	Beer, aluminium, all types, all sizes	0.3020	0.8628	0.1438	0.0530	2.2379	0.1150	0.7621	<b>0.4747</b>
	Cider/fruit based etc.	0.0000	0.0000	0.0000	0.0000	0.0000	0.0000	0.0000	<b>0.0000</b>
	Flav. water/soft drink, (carbonated), all sizes	0.6759	1.0246	0.7046	0.0424	1.7526	0.0144	1.3230	<b>0.6628</b>
	Flav. water/soft drink, (non-carb), all sizes	0.1654	0.1193	0.0000	0.0000	0.0000	0.0000	0.0127	<b>0.0376</b>
	Foil take away	0.2004	0.0000	0.2158	0.0341	0.2023	0.0154	0.0617	<b>0.1008</b>
	Food cans (including pet food)	0.0000	0.0580	0.0155	0.0228	0.0000	0.1237	0.0309	<b>0.0361</b>
	Industrial cans - all types	0.0000	0.0000	0.1523	0.2248	0.0000	0.0000	0.0000	<b>0.0712</b>
	Metal bottle tops and can pull rings	0.0016	0.0275	0.0007	0.0013	0.0025	0.0021	0.0009	<b>0.0036</b>
	Metal pieces	0.0021	0.0093	0.0018	0.0047	0.0046	0.0035	0.0046	<b>0.0040</b>
	Other foil	0.0012	0.0002	0.0010	0.0005	0.0002	0.0000	0.0008	<b>0.0006</b>
	<b>Total</b>	<b>1.7272</b>	<b>2.5581</b>	<b>1.4790</b>	<b>0.4557</b>	<b>5.8659</b>	<b>0.3866</b>	<b>3.2082</b>	<b>1.8547</b>

NATIONAL - MAY 2010		Volume - Litres per 1,000m <sup>2</sup>							Total
		NSW	NT	QLD	SA	TAS	VIC	WA	
MISCELLANEOUS	Clothing & materials	0.0046	0.0029	0.0112	0.0049	0.0163	0.0041	0.0240	<b>0.0095</b>
	Condoms	0.0000	0.0000	0.0000	0.0000	0.0000	0.0000	0.0000	<b>0.0000</b>
	Construction materials	0.1320	0.3600	0.2760	0.0531	0.3600	0.0480	0.1800	<b>0.1700</b>
	Disposable nappies	0.0000	0.0000	0.0000	0.0000	0.0000	0.0000	0.0000	<b>0.0000</b>
	Ice cream sticks	0.0000	0.0000	0.0000	0.0000	0.0000	0.0000	0.0000	<b>0.0000</b>
	Other miscellaneous	0.0068	0.0076	0.0050	0.0103	0.0025	0.0014	0.0072	<b>0.0062</b>
	Rubber pieces (not tyres)	0.0001	0.0001	0.0001	0.0000	0.0000	0.0000	0.0000	<b>0.0000</b>
	Syringes	0.0000	0.0010	0.0000	0.0000	0.0000	0.0000	0.0000	<b>0.0001</b>
	Tyres & pieces	0.0750	3.2625	0.1125	0.0387	0.1688	0.0525	0.1125	<b>0.3480</b>
<b>Total</b>	<b>0.2184</b>	<b>3.6340</b>	<b>0.4047</b>	<b>0.1071</b>	<b>0.5476</b>	<b>0.1060</b>	<b>0.3237</b>	<b>0.5338</b>	
PAPER/PAPERBOARD	Cartons, flavoured milk < 1 litre	0.1749	0.4686	0.1499	0.1291	0.2343	0.1499	1.3245	<b>0.3658</b>
	Cartons, flavoured milk 1 litre+	0.0338	0.0000	0.0000	0.0000	0.0000	0.0000	0.0000	<b>0.0053</b>
	Cartons, fruit juice, < 1 litre	0.0417	0.0000	0.0208	0.0000	0.0781	0.0000	0.0208	<b>0.0195</b>
	Cartons, fruit juice, 1 litre+	0.0000	0.0000	0.0000	0.0000	0.0000	0.0000	0.0000	<b>0.0000</b>
	Cartons, milk, plain (white) all sizes	0.0675	0.0633	0.0000	0.0249	0.0633	0.0000	0.2363	<b>0.0631</b>
	Cigarette packets	0.2905	0.0953	0.1307	0.0696	0.2587	0.1162	0.2179	<b>0.1617</b>
	Cups/take away containers	1.6037	0.1367	1.0934	0.1255	2.5513	0.1215	0.7532	<b>0.8059</b>
	Flav. water/fruit j. drink/sports drink, non-carb, <1 litre	0.0349	0.0819	0.0175	0.0000	0.0000	0.0000	0.0175	<b>0.0177</b>
	Flav. water / fruit j. drink/ sports drink, (non-carb), 1 litre+	0.0000	0.0000	0.0690	0.0000	0.0000	0.0000	0.0000	<b>0.0107</b>
	Ice cream wrappers	0.0002	0.0003	0.0003	0.0005	0.0009	0.0000	0.0002	<b>0.0003</b>
	Junk mail / free circulars	0.0522	0.0109	0.0058	0.0300	0.0326	0.0058	0.0464	<b>0.0271</b>
	Newspapers & magazines	0.3933	0.3688	0.1573	0.0871	0.3688	0.0000	0.1967	<b>0.1960</b>
	Other paper	0.0106	0.0507	0.0178	0.0114	0.0078	0.0154	0.0062	<b>0.0151</b>
	Packages & boxes	0.0640	0.0600	0.0560	0.0197	0.0750	0.0107	0.0773	<b>0.0478</b>
	Paper bags	0.0095	0.0364	0.0067	0.0016	0.0066	0.0025	0.0081	<b>0.0081</b>
	Shopper docketts & related shopping paper (eg, lists)	0.0000	0.0000	0.0008	0.0001	0.0003	0.0000	0.0001	<b>0.0002</b>
Tickets, e.g. bus, ATM, vending machine etc.	0.0000	0.0000	0.0001	0.0000	0.0001	0.0000	0.0000	<b>0.0000</b>	
<b>Total</b>	<b>2.7768</b>	<b>1.3728</b>	<b>1.7263</b>	<b>0.4993</b>	<b>3.6777</b>	<b>0.4220</b>	<b>2.9053</b>	<b>1.7441</b>	

NATIONAL - MAY 2010		Volume - Litres per 1,000m <sup>2</sup>							Total
		NSW	NT	QLD	SA	TAS	VIC	WA	
PLASTIC	6 ring can holders	0.0000	0.0000	0.0000	0.0000	0.0002	0.0001	0.0000	0.0000
	Bags - heavier glossy typically branded carry bags	0.0000	0.0055	0.0058	0.0108	0.0164	0.0000	0.0234	0.0086
	Bags - supermarket type light weight carry bags	0.0091	0.0021	0.0147	0.0134	0.0233	0.0124	0.0057	0.0115
	Bread bag tags	0.0000	0.0000	0.0000	0.0000	0.0000	0.0000	0.0000	0.0000
	Containers, domestic type	0.8324	0.5203	0.8324	0.4094	1.0405	0.0000	1.1099	0.6481
	Containers, industrial e.g. oil	0.0000	0.0000	0.0000	1.1045	0.0000	0.0000	0.0000	0.2331
	Drink pouches	0.0029	0.0000	0.0000	0.0000	0.0000	0.0000	0.0000	0.0004
	Flav. milk, <1 litre	0.0710	0.0000	0.4617	0.0000	0.9988	0.0178	0.1065	0.1852
	Flav. milk, 1 litre+	0.0000	0.0000	0.1424	0.0000	0.2671	0.0000	0.4986	0.1220
	Flav.wtr/fruit j. dr, sprts dr etc.(non-carb) <1 litre	0.1854	0.1738	0.0371	0.0000	0.1390	0.0000	0.2410	0.0981
	Flav. wtr/fruit j. dr, sprts dr etc.(non-carb) 1 litre+	0.3308	0.2068	0.0000	0.0000	0.1034	0.0000	0.4411	0.1459
	Flav. water/soft drink (carbonated) <1 litre	0.5599	0.3499	0.3733	0.0153	2.0607	0.2696	1.0783	0.5586
	Flav. water/soft drink (carbonated) 1 litre+	0.0000	0.2068	0.5513	0.0000	0.9304	0.0000	0.3859	0.2404
	Fruit juice <1 litre	0.0000	0.0000	0.0355	0.0000	0.1665	0.0000	0.0888	0.0332
	Fruit juice, 1 litre+	0.0000	0.0000	0.0000	0.0000	0.2671	0.0000	0.4273	0.0887
	Lollipop sticks	0.0001	0.0000	0.0001	0.0001	0.0001	0.0000	0.0000	0.0000
	Other plastic	0.0023	0.0209	0.0031	0.0021	0.0021	0.0005	0.0028	0.0037
	Packing tape & straps	0.0001	0.0002	0.0001	0.0000	0.0002	0.0001	0.0000	0.0001
	Plain water (carbonated or non-carb) <1 litre	0.1051	0.0985	0.4990	0.0000	0.2955	0.0525	0.2889	0.1799
	Plain water (carbonated or non-carb) 1 litre+	0.0514	0.1927	0.1542	0.0000	0.0963	0.0514	0.9249	0.2080
	Plastic bottle tops	0.0056	0.0045	0.0061	0.0020	0.0030	0.0011	0.0013	0.0032
	Sacks - sheeting - other bags	0.0000	0.0000	0.0001	0.0000	0.0001	0.0000	0.0001	0.0000
	Snack bags & confectionary wrappers	0.0070	0.0113	0.0089	0.0027	0.0210	0.0003	0.0107	0.0074
	Spoons/ cutlery	0.0026	0.0000	0.0013	0.0019	0.0006	0.0003	0.0029	0.0015
	Straws	0.0048	0.0005	0.0017	0.0015	0.0021	0.0011	0.0017	0.0020
	Styrene foam boxes, sheets, etc	0.0050	0.0469	0.0100	0.0129	0.0352	0.0263	0.0088	0.0173
	Take away & cups	0.0276	0.0647	0.0897	0.0865	0.3493	0.0552	0.2415	0.1171
	White milk, all sizes	0.0000	0.0000	0.2849	0.1576	0.1335	0.0000	0.0000	0.0887
Wine cask bladders	0.0000	0.0000	0.0000	0.0113	0.0288	0.0000	0.0000	0.0048	
<b>Total</b>	<b>2.2030</b>	<b>1.9052</b>	<b>3.5134</b>	<b>1.8321</b>	<b>6.9812</b>	<b>0.4885</b>	<b>5.8901</b>	<b>3.0080</b>	
<b>GRAND TOTAL</b>	<b>7.8333</b>	<b>11.3338</b>	<b>7.3631</b>	<b>3.6032</b>	<b>23.0178</b>	<b>1.5444</b>	<b>14.6049</b>	<b>8.4941</b>	